



This document contains information proprietary to
ADVANCED GROUND SYSTEMS ENGINEERING LLC

and shall not be reproduced nor transferred to other documents, nor disclosed to others, or used for any purpose other than that for which it is furnished without the prior written permission of Advanced Ground Systems Engineering LLC.

AM-2079

“Loadmaster” Shock Absorbing Swivel Casters

ORIGINAL MANUAL DATED 02/16/98

LATEST MANUAL REVISION LEVEL 07/21/2023 (REV U)

ADVANCED GROUND SYSTEMS ENGINEERING LLC

10805 Painter Ave., Santa Fe Springs, CA, 90670 • PHONE: 562-906-9300 • FAX: 562-906-9308 • E-MAIL: agse@agsecorp.com

NOTICE

1. Alteration, Modification, Reengineering, or Reproduction of Equipment

The alteration, modification, reengineering, or reproduction of AGSE equipment and/or parts is not permitted without prior written authorization from AGSE.

These modifications include but are not limited to:

- Structural changes to AGSE-supplied parts
- Substitution of AGSE-supplied parts, including hardware, with an alternate source or supplier
- Reverse engineering of AGSE equipment and parts.

Requests for modifications should be submitted to AGSE for review – please send modification requests to support@agsecorp.com.

Once reviewed by our Engineering team, a Customer Support Letter (Subject: No Technical Objection) will be issued for any approved modifications.

NOTE

Modifications executed without prior authorization by AGSE may result in a non-compliant product that is unsafe for operation.

Unauthorized modifications void AGSE's and the OEM's (Engine and/or Airframer) approval and authority to use the product for its intended application.

INDEX

SECTION	DESCRIPTION	PAGE(S)
1.0	Revisions	1.0
2.0	Illustrations	2.0
3.0	Specification	3.0
3.0	3.1 General	3.0
3.0	3.2 Construction and Finish	3.0
3.0	3.3 Characteristics	3.0
4.0	Maintenance and Inspection	4.0
4.0	4.1 General	4.0
4.0	4.2 Cleaning and Painting	4.0
4.0	4.3 Scheduled Service	4.0
5.0	Operation	5.0
5.0	5.0 General	5.0
5.0	5.1 Steering Bar Operation	5.0
5.0	5.2 Caster Lubrication	5.0
5.0	5.3 Caster Brake Adjustment	5.6
6.0	Safety	6.0
6.0	6.1 Stress	6.0
6.0	6.2 General	6.0
6.0	6.3 Prevention	6.0
7.0	Warranty	7.0
7.0	7.1 Statement of Warranty	7.0
8.0	Parts Breakdown	8.0
8.0	8.1 General	8.0
8.0	8.2 Illustrated Parts Breakdown	8.8
8.0	IPB Figure 1 - AM-2079-2 Shock Absorbing Swivel Caster Assembly	8.1
8.0	IPB Figure 2 - AM-2079-4 Shock Absorbing Swivel Caster Assembly	8.4
8.0	IPB Figure 3 - AM-2079-7 Shock Absorbing Swivel Caster Assembly	8.6
8.0	IPB Figure 4 - AM-2079-13 Shock Absorbing Swivel Caster Assembly	8.10
8.0	IPB Figure 5 - AM-2079-20 Shock Absorbing Swivel Caster Assembly	8.13
9.0	Recommended Spares	9.0
9.0	9.1 Terms	9.0
9.0	9.2 Critical Items	9.0

1.0 – Revisions

The following is an itemized record of all changes from previous revision.

PAGE	REV	DESCRIPTION OF CHANGE	DATE
2.0	U	Updated Figure 2.0-1	7/21/2023
2.1	U	Updated Figure 2.0-2	7/21/2023
2.2	U	Updated Figure 2.0-3	7/21/2023
3.1	U	Updated Figure 3.3-1	7/21/2023
3.2	U	Updated Figure 3.3-2	7/21/2023
3.3	U	Updated Figure 3.3-3	7/21/2023
8.1	U	Updated Part Number Item 13, 19, 22 & 23	7/21/2023
8.3	U	Updated Figure 8.1-1	7/21/2023
8.4	U	Updated Part Number Item 13, 19, 22 & 23	7/21/2023
8.6	U	Updated Figure 8.2-1	7/21/2023
8.7	U	Updated Part Number Item 12, 19, 22 & 23	7/21/2023
8.9	U	Updated Figure 8.3-1	7/21/2023
8.10	U	Updated Part Number Item 13, 19, 22 & 23	7/21/2023
8.13	U	Updated Part Number Item 12, 19 & 22	7/21/2023

2.0 – Illustrations - AM-2079-2

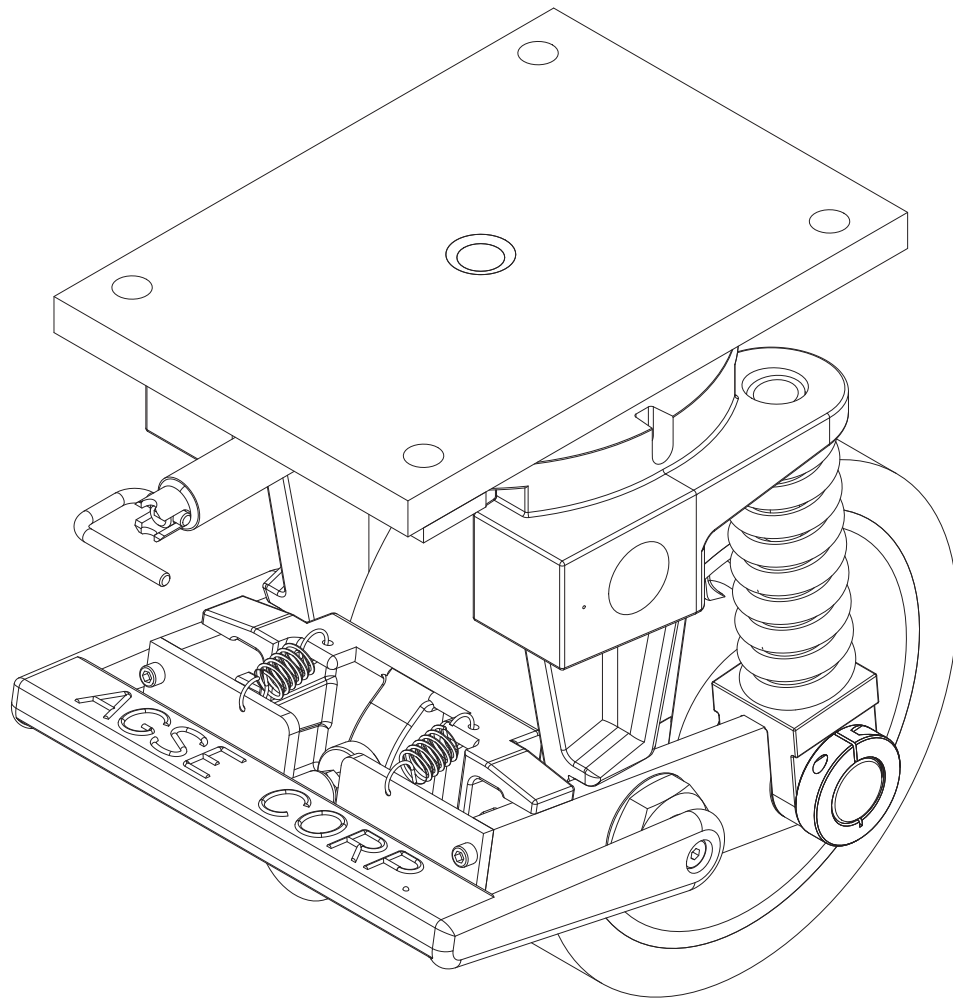


Figure 2.0-1 - AM-2079-2 "Loadmaster" Shock Absorbing Swivel Caster

2.0 – Illustrations - AM-2079-4

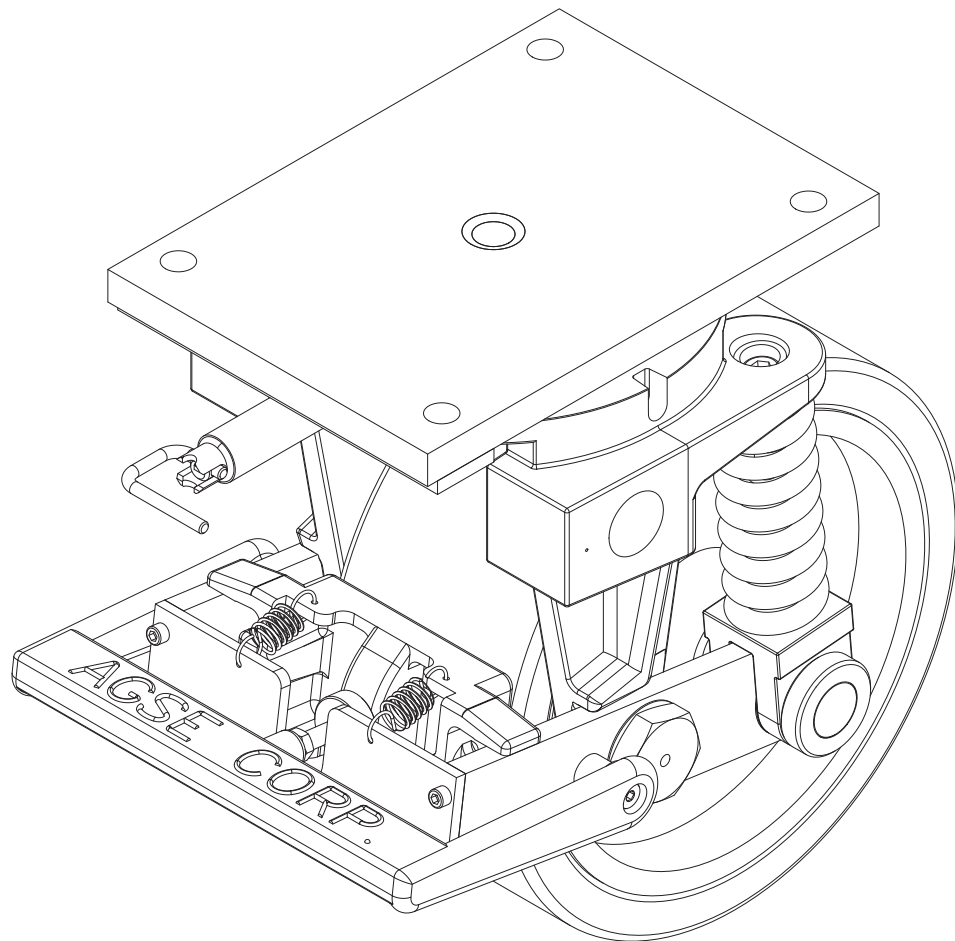


Figure 2.0-2 - AM-2079-4 "Loadmaster" Shock Absorbing Swivel Caster

2.0 – Illustrations - AM-2079-7

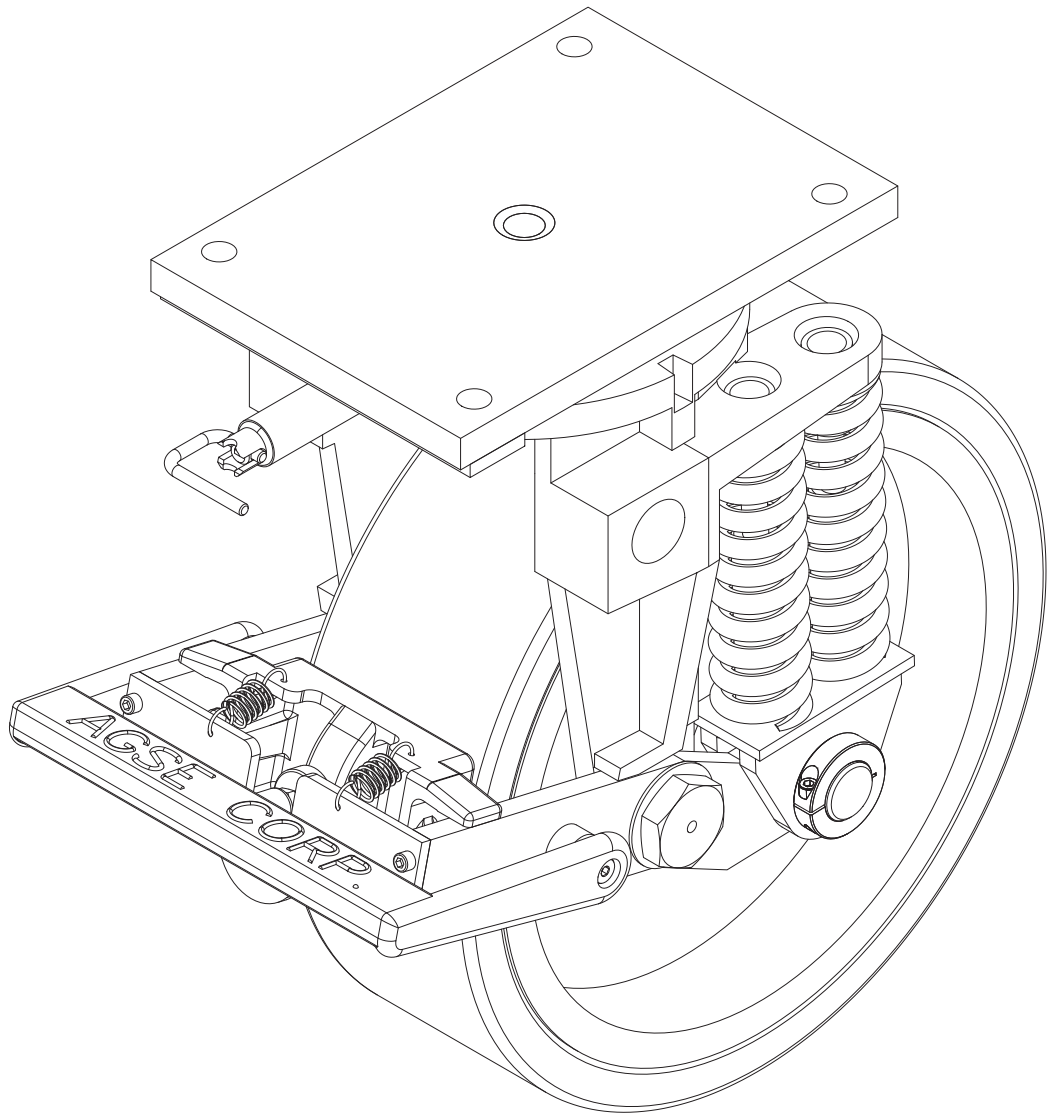


Figure 2.0-3 - AM-2079-7 "Loadmaster" Shock Absorbing Swivel Caster

2.0 – Illustrations - AM-2079-13

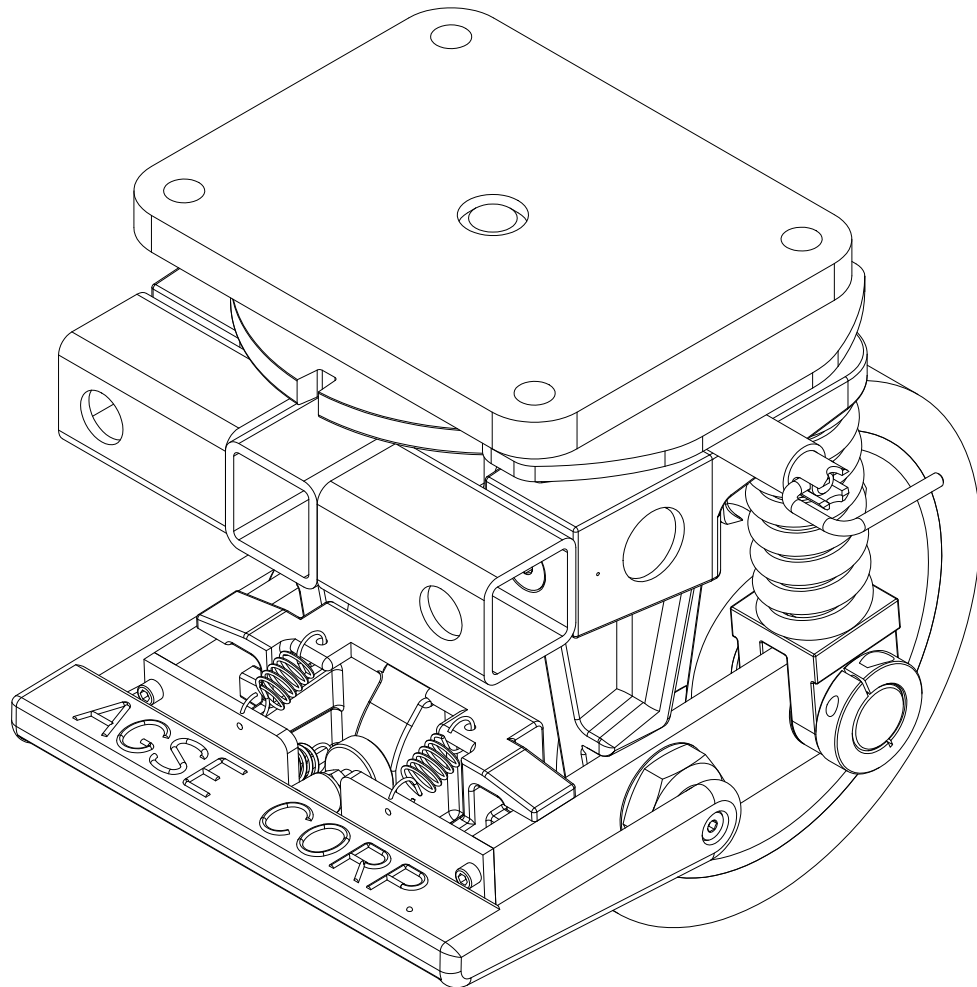


Figure 2.0-4 - AM-2079-13 "Loadmaster" Shock Absorbing Swivel Caster (For Use With 956A8600 Leap 1B)

2.0 – Illustrations - AM-2079-20

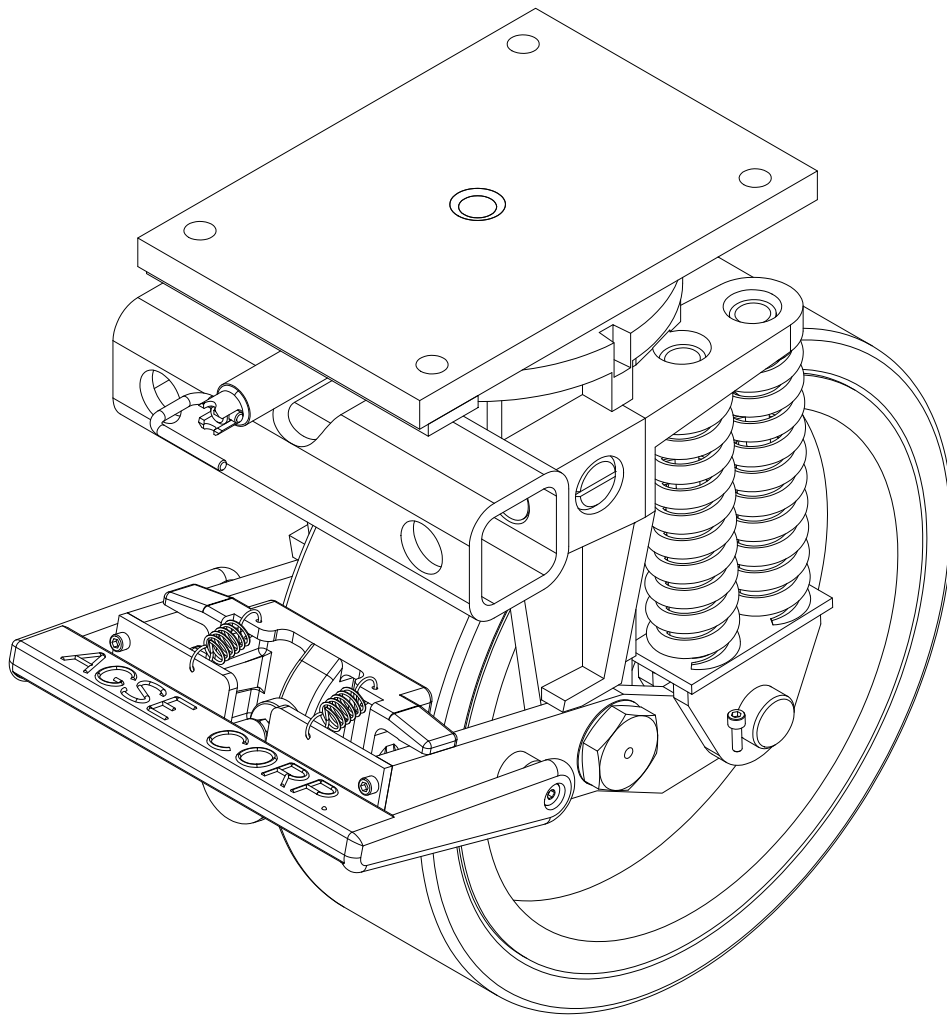


Figure 2.0-5 - AM-2079-20 "Loadmaster" Shock Absorbing Swivel Caster

3.0 – Specification

3.1 General

The AGSE “Loadmaster” is a unique concept in casters specifically designed to provide shock protection, load equalization, and support for heavy loads- unavailable from conventional casters. The 5” wide polyurethane wheels on these casters are mounted on an offset shock absorption system consisting of heavy duty die springs.

The “Knee Action” design keeps the casters ON THE FLOOR over uneven surfaces and ensures load sharing by all casters, reducing individual caster overload and premature failure. In addition, the “Loadmaster” caster provides excellent secondary protection for fragile loads by reducing shock inputs induced during towing operations. These casters are used primarily for jet engine transport equipment.

All “Loadmaster” casters are standard equipped with foot operated brakes and four-position swivel locks. Wheel diameters come in 10, 12 and 16 inch sizes.

3.2 Construction and Finish

The “Loadmaster” consists of a cast iron, machined main frame and sub-assemblies attached with bolted hardware and weldments. All bolted connections use A325 structural bolts or grade 5 commercial hardware. Painted pieces are primed and painted with high grade, Skydrol resistant enamel. Pins and miscellaneous hardware are Corrosion Resistant Steel (CRES) or plated as required.

3.3 Characteristics

Note: For dimensions and clearances see figures 3.3-1 through 3.3-5.

Model	Wheel Diameter	Capacity	Weight
AM-2079-2	10”	5,000 Lbs.	107 Lbs.
AM-2079-4	12”	5000 Lbs.	130 Lbs.
AM-2079-7	16”	6500 Lbs.	146 Lbs.
AM-2079-13	10”	5,000 Lbs	107 Lbs.
AM-2079-20	16”	10,000 Lbs.	150 Lbs.

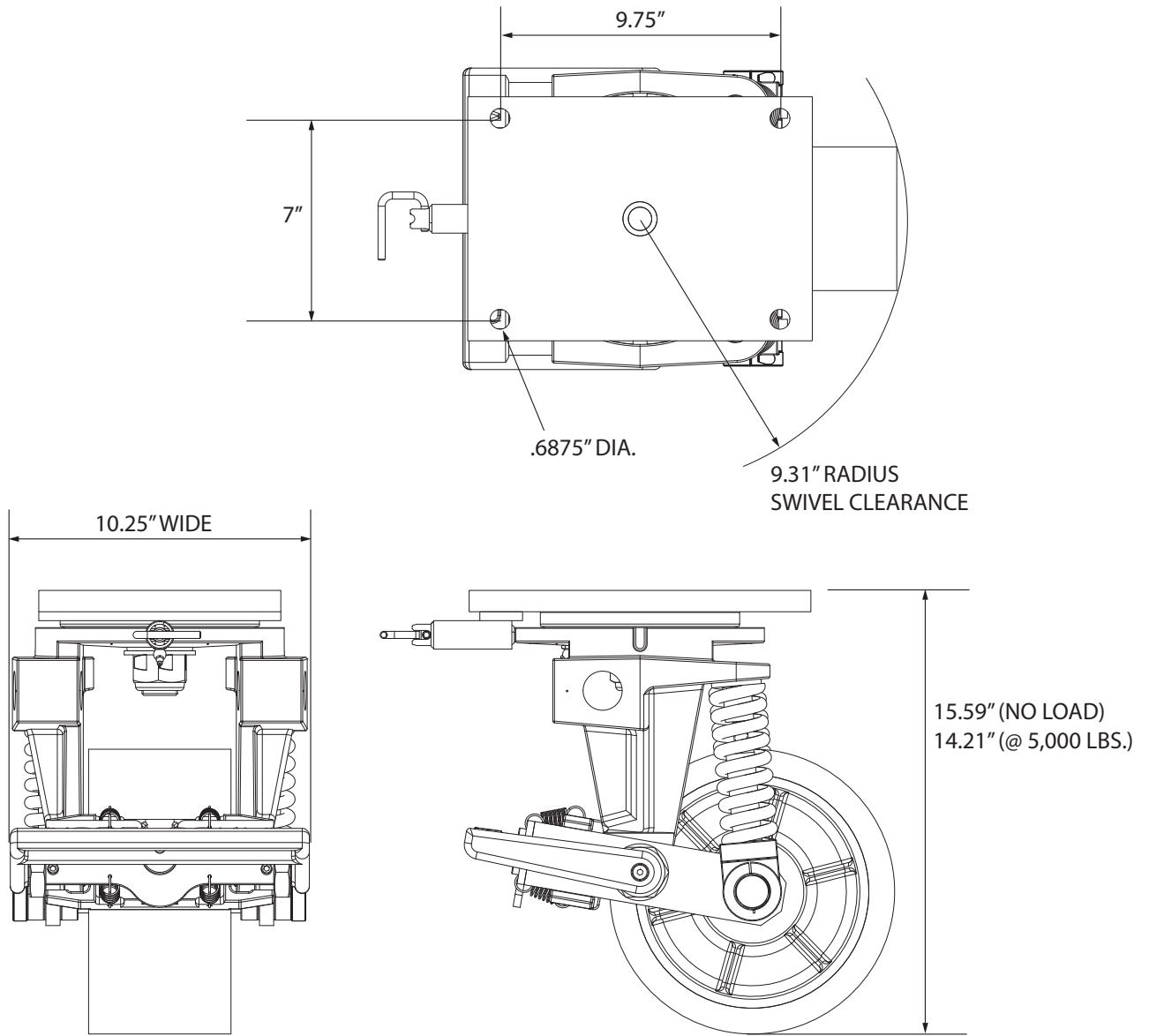


Figure 3.3-1 Dimensions and Clearances for AM-2079-2 (5,000 Lbs - 10" Diameter)

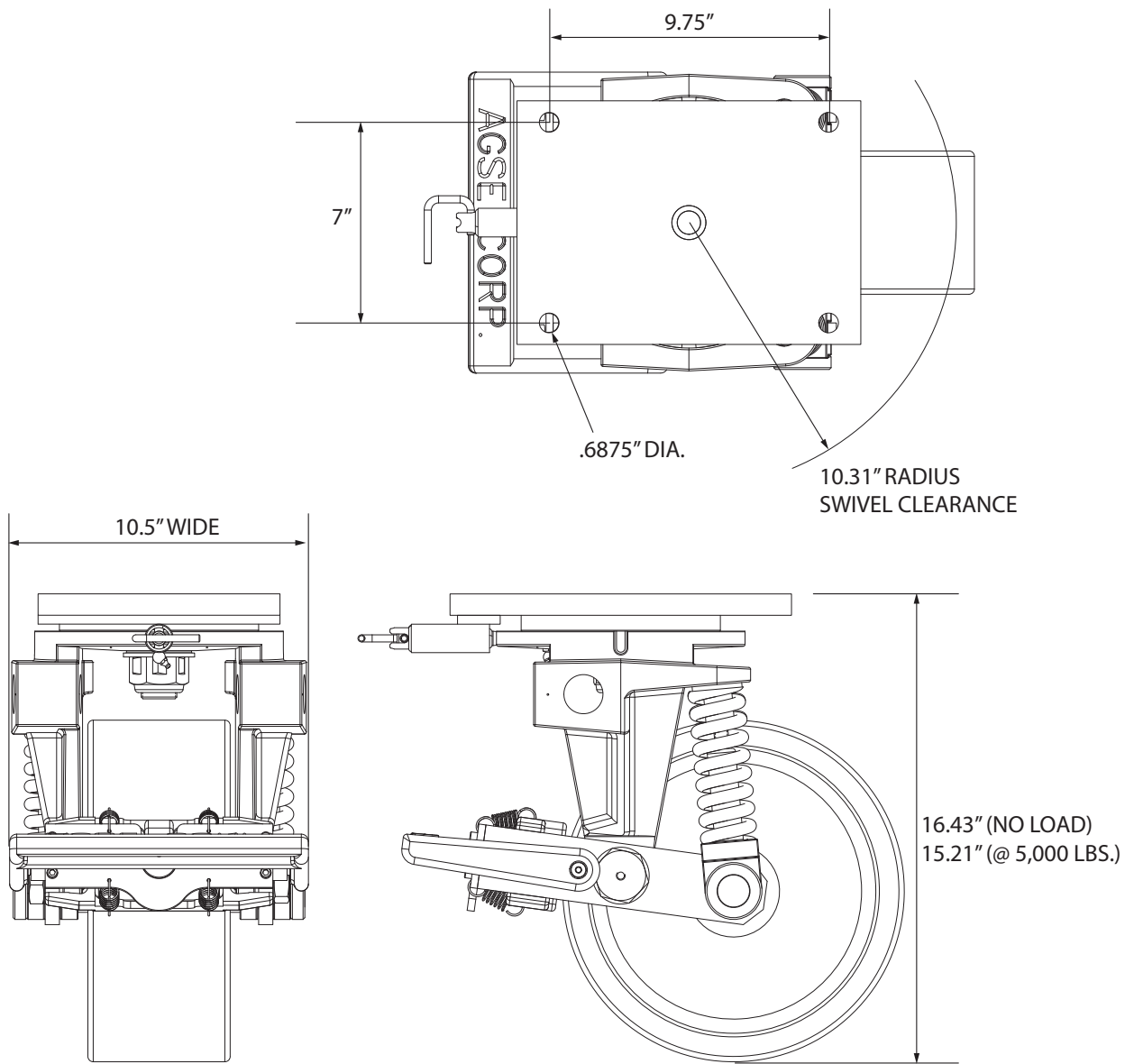


Figure 3.3-2 Dimensions and Clearances for AM-2079-4 (5,000 Lbs - 12" Diameter)

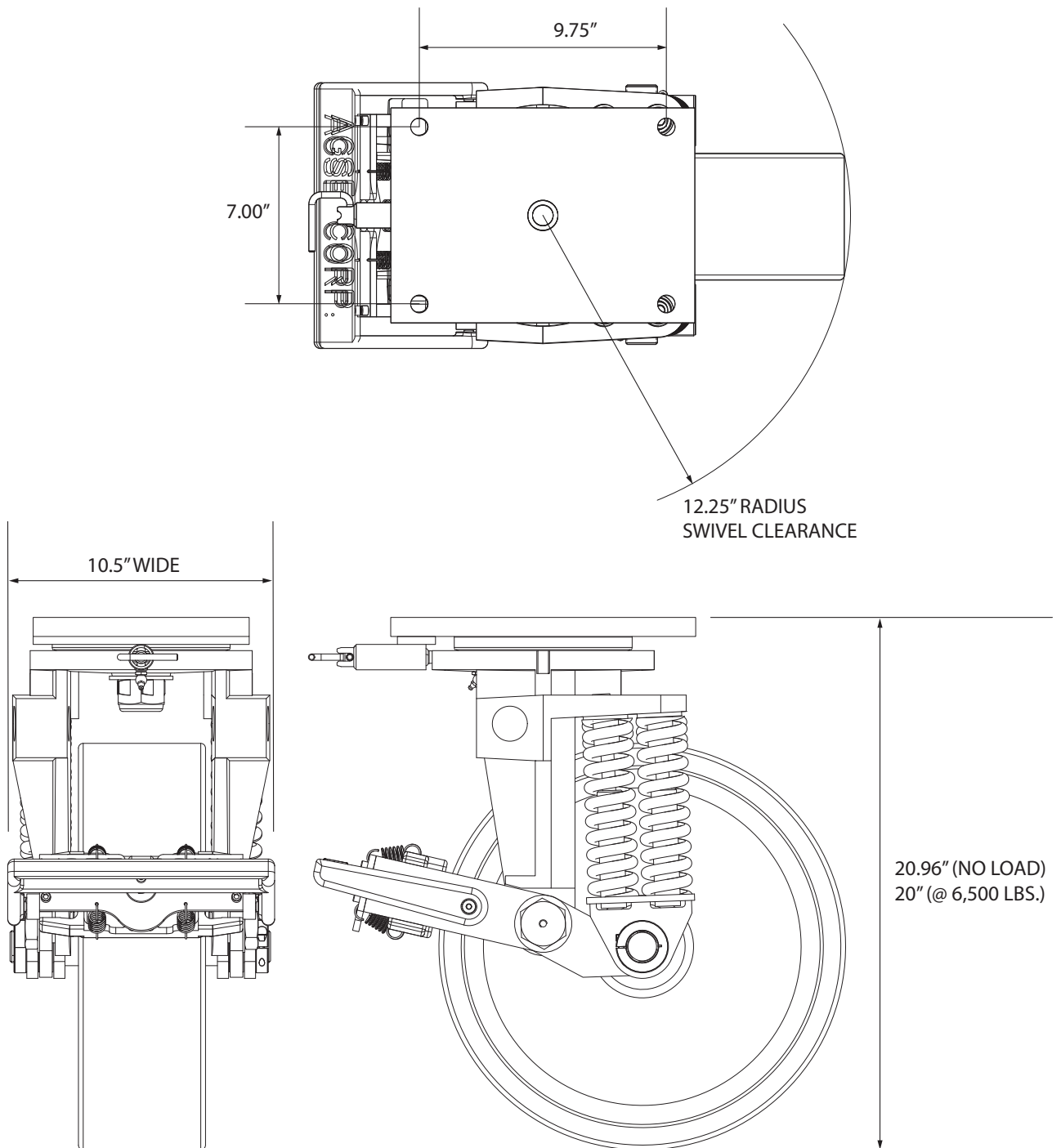


Figure 3.3-3 Dimensions and Clearances for AM-2079-7 (6,500 LBS -16" Diameter)

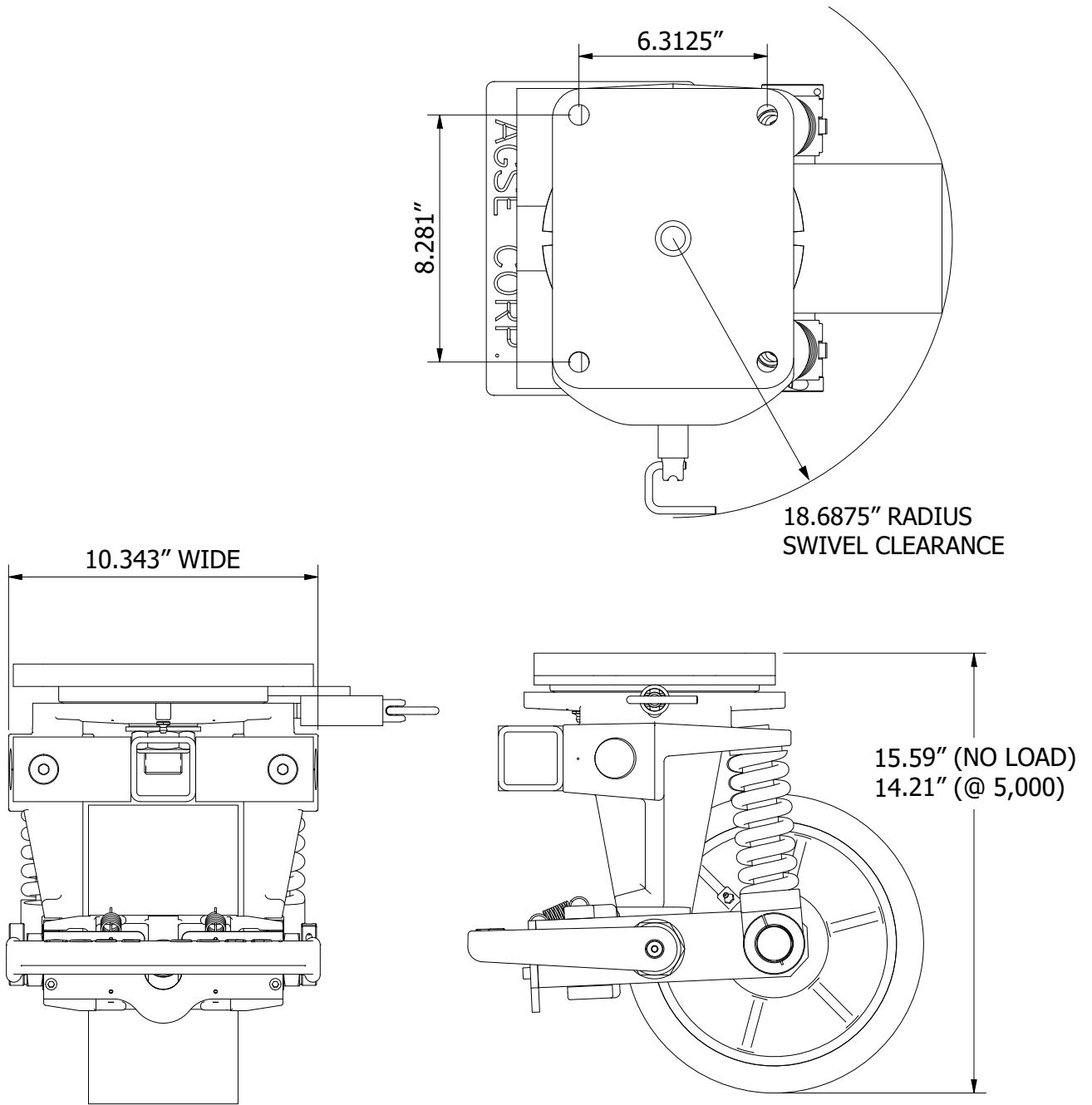


Figure 3.3-4 Dimensions and Clearances for AM-2079-13 (5,000 LBS -10" Diameter)

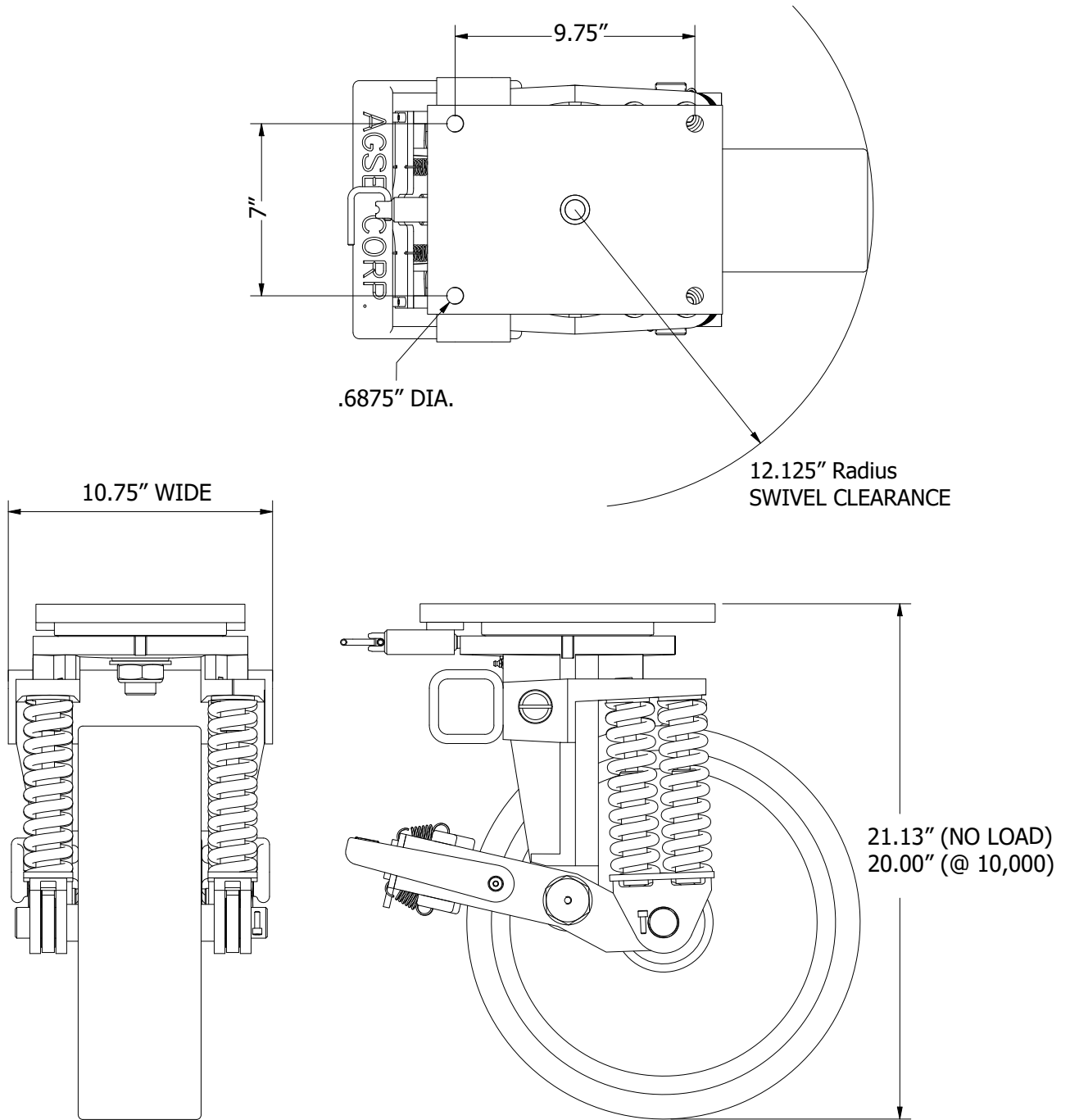


Figure 3.3-5 Dimensions and Clearances for AM-2079-20 (10,000 LBS -16" Diameter)

4.0 – Maintenance and Inspection

4.1 General

Life expectancy of this unit can be extended indefinitely, if it is properly maintained. By design, there is only minimal periodic servicing required. Annual inspections for damage, weld cracks, or corrosion are recommended. Prior to each use, the casters should be inspected for obvious signs of abuse or shipping damage. Observed damage should require complete inspection of the affected area to ensure integrity is not compromised.

4.2 Cleaning and Painting

The casters should be cleaned with a soap and water solution and rinsed thoroughly.

NOTICE

Re-lubricate wheel bearings and swivels after cleaning the casters.

Damaged paint should be touched-up with paint provided by AGSE or other Skydrol resistant high-grade enamel paint. Superficial scratches are expected during normal usage and will not affect function.

4.3 Scheduled Service

All zerk fittings on the casters should be lubricated every 90 days with the following extreme pressure grease or equivalent grease:

Manufacturer	Product
Mobil Oil Company	Mobilplex E.P. #1
Texaco Oil Company	Texaco E.P. #1
Gulf Oil Company	Gulf Crown E.P. #1
Shell Oil Company	Shell Alavania E.P. #1

Visual inspection of the swivel locks and brakes should occur with the scheduled lubrication. All non-painted machined surfaces should have a light grade oil spray as required. Spray with aerosol lubrication WD-40, or equivalent.

5.0 – Operation

5.0 General

Installation of casters consists of bolting four locations with hardware provided. Align holes in caster mounting plate with the holes in unit to be attached. Torque bolts to 50 Ft. Lbs. each.

Casters can be turned freely by pulling the swivel locking pin and turning it 90° to vertical. Swivel caster to desired position, and release locking pin into horizontal position. Move caster slightly to make sure pin has seated into slot properly. Although there are four locking positions, typically casters should be positioned with foot brakes facing forward, and all facing same direction. Always set foot brakes during loading operations or whenever units are stored.

WARNING

Failure to unlock foot brakes on casters during towing operations will result in flat spots being worn into the tread surface of wheels.

5.1 Steering Bar Operation

The steering bar provided is designed to facilitate the stowing, deploying and turning the casters.

5.1.1 Stowing the casters (The base must be off the ground) (Figures 5.1-1 through 5.1-3)

- a. Remove Safety Pin securing the caster to the base.
- b. Unlock the caster swivel lock by pulling out the handle and turn 90°.
- c. Insert the end of the steering bar fully into caster's inboard steering socket.
- d. Lift the caster by pushing the steering bar forward.
- e. Insert safety pin.

5.1.2 Steering the casters (Figure 5.1-4)

- a. Unlock the caster swivel lock by pulling out the handle and turn 90°.
- b. Insert the end of the steering bar fully into caster's outboard steering socket.
- c. Pull or push on the steering bar toward the desired direction.

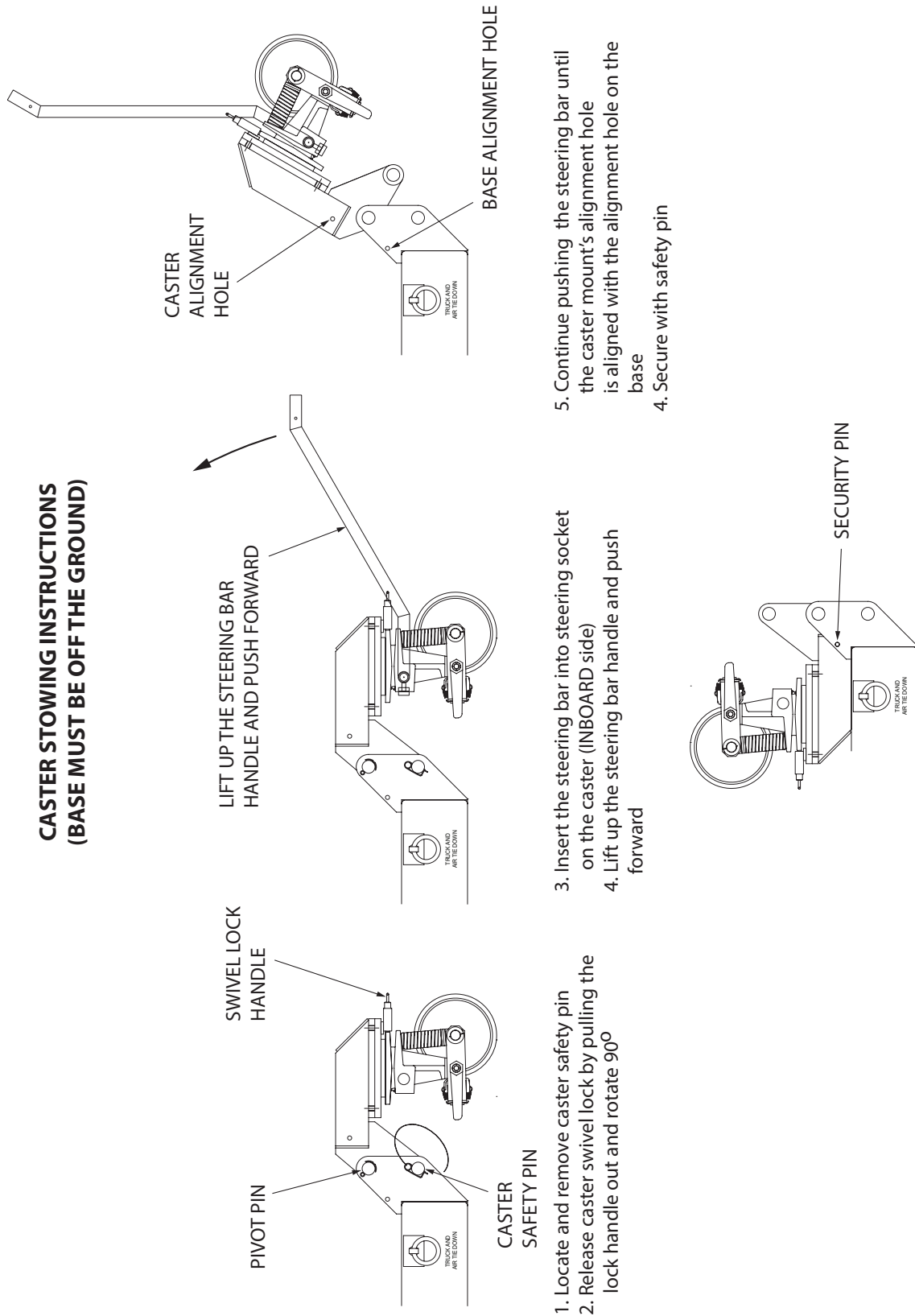
5.2 Caster Lubrication

After caster assembly/re-assembly, make sure that the wheel bearing and pivot bearing are lubricated using extreme pressure grease referred in Section 4.3 - Scheduled Service.

WARNING

Failure to lubricate the caster wheel bearing and pivot bearing after assembly/re-assembly will result in serious damage to caster.

**CASTER STOWING INSTRUCTIONS
(BASE MUST BE OFF THE GROUND)**



1. Locate and remove caster safety pin
2. Release caster swivel lock by pulling the lock handle out and rotate 90°
3. Insert the steering bar into steering socket on the castor (INBOARD side)
4. Lift up the steering bar handle and push forward
5. Continue pushing the steering bar until the caster mount's alignment hole is aligned with the alignment hole on the base
4. Secure with safety pin

Figure 5.1-1 Caster Lifting and Stowing

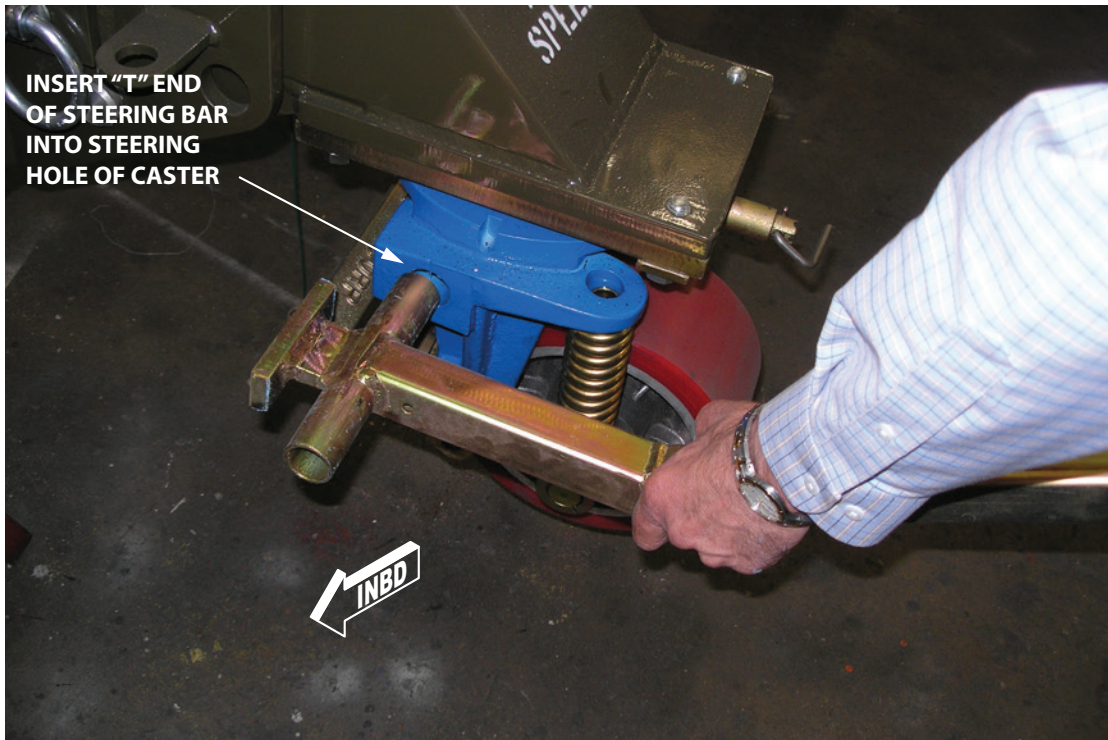
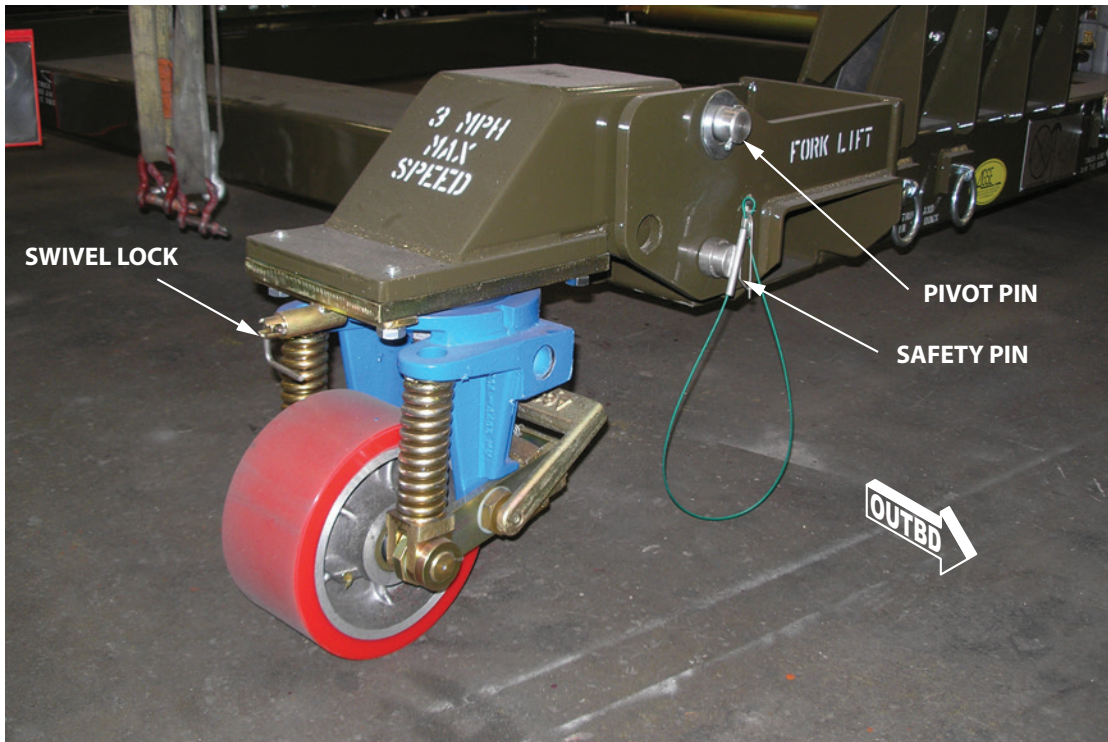


Figure 5.1-2

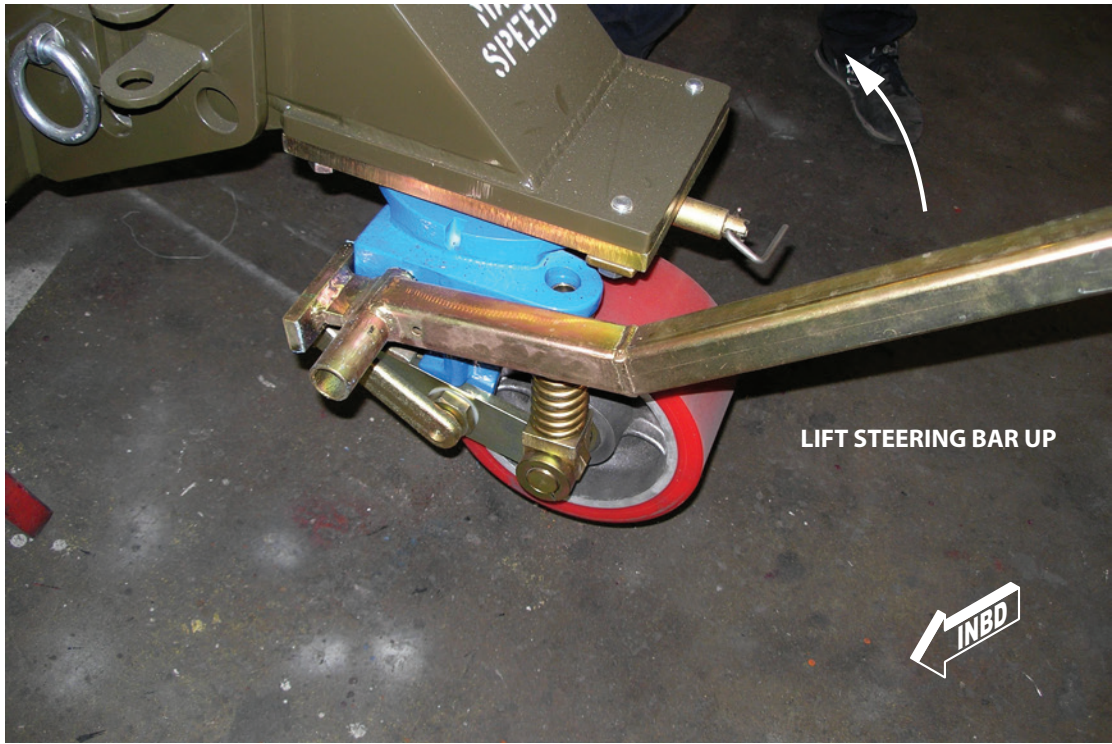


Figure 5.1-3

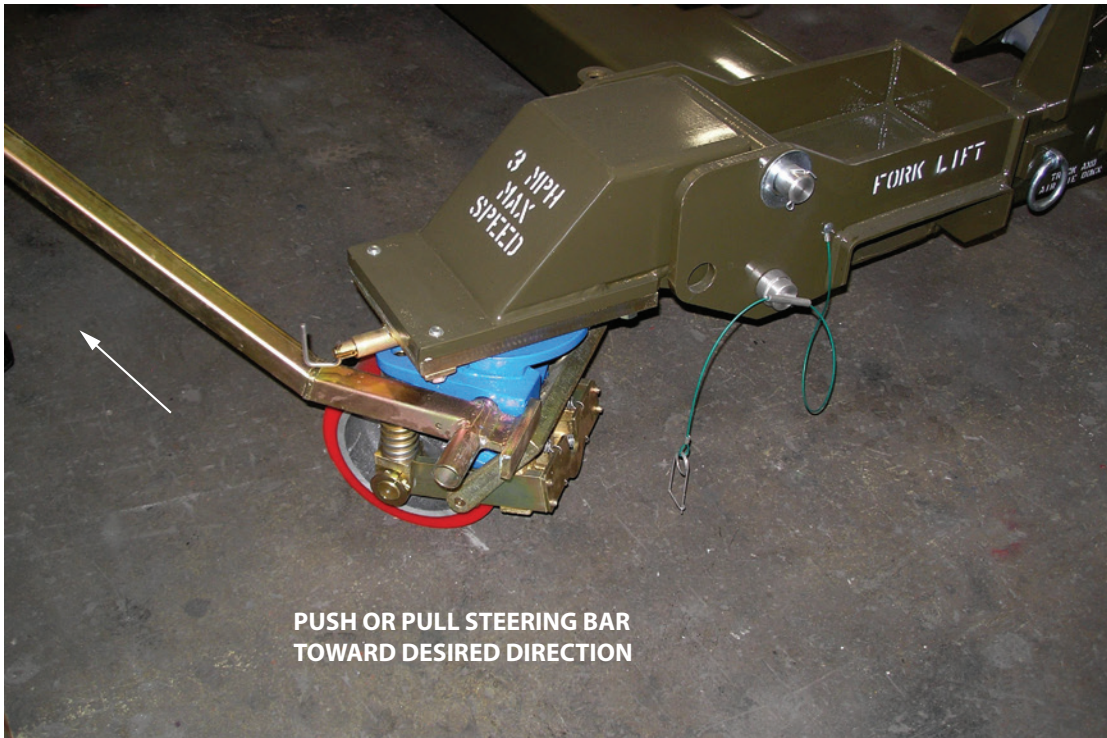
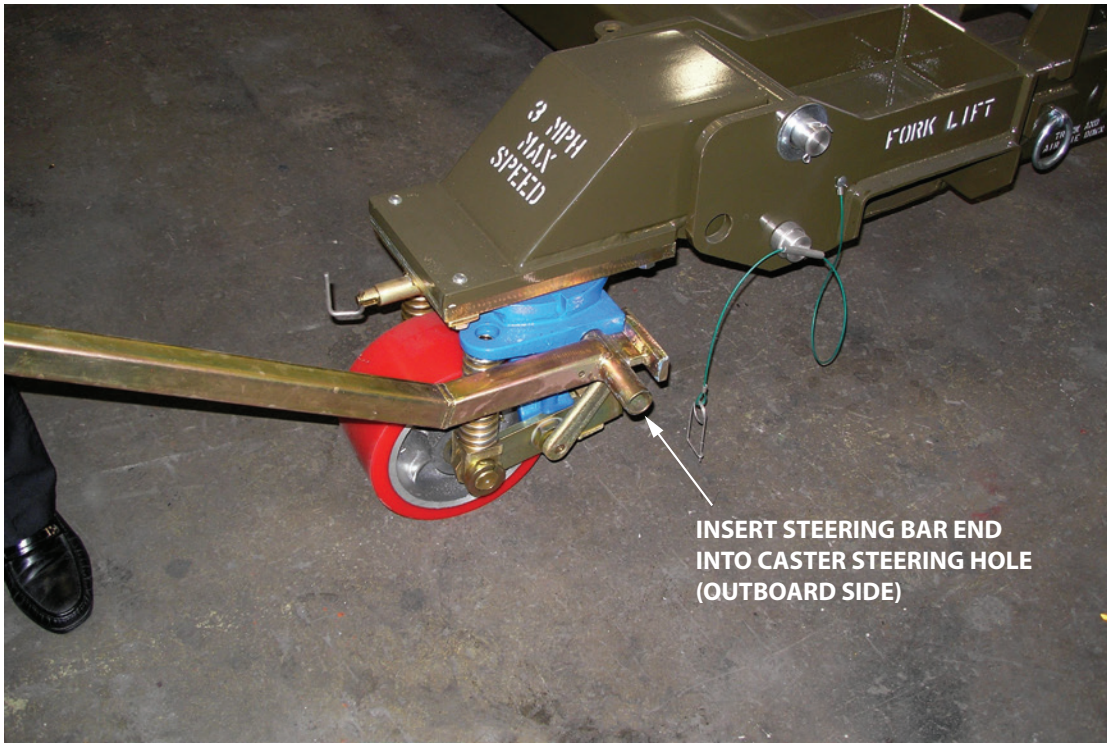
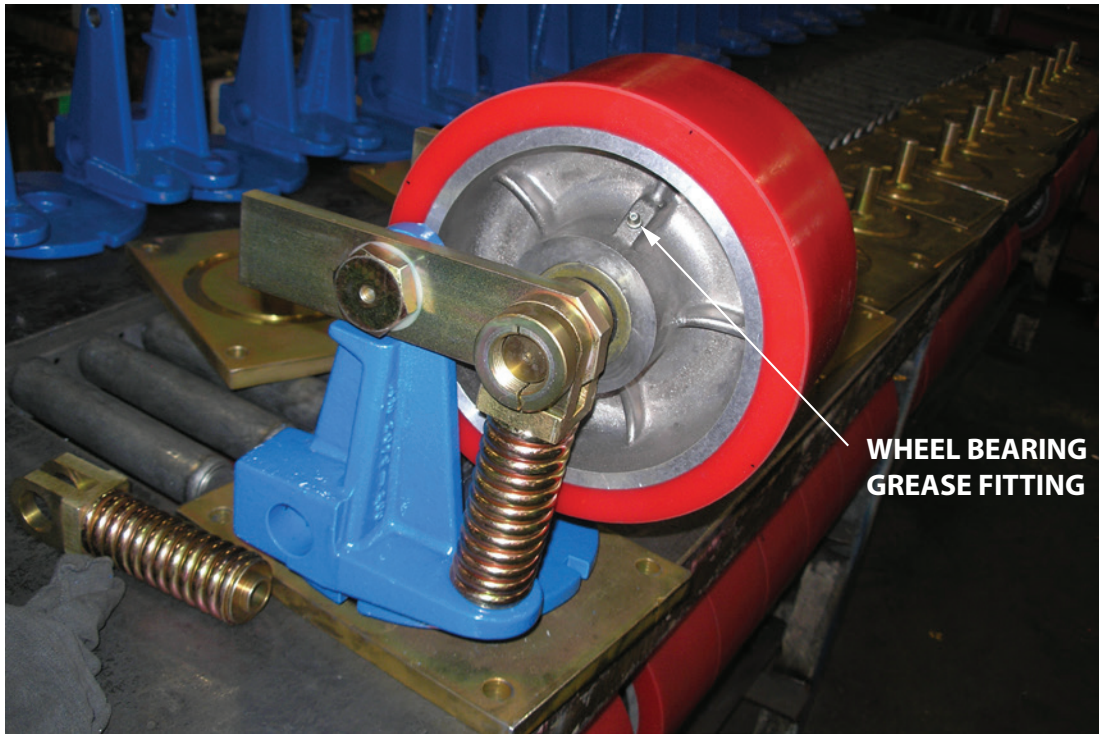
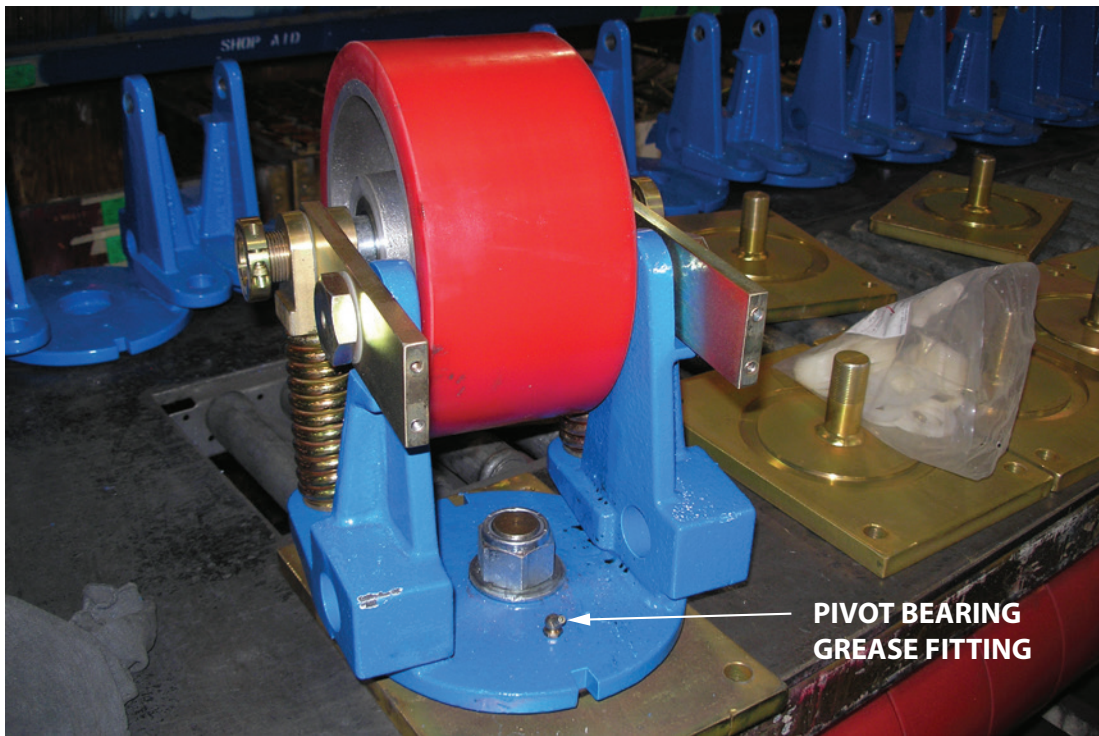


Figure 5.1-4 Caster Steering



CASTER WHEEL BEARING LUBRICATION POINT



CASTER PIVOT BEARING LUBRICATION POINT

Figure 5.2-1 Caster Lubrication

5.3 Caster Brake Adjustment (Figure 5.3-1) (Reference IPB Figure 2)

1. As the polyurethane wheels wear over time, the caster brakes can come out of adjustment.
2. To tighten the brakes, adjust the Knurled Head Screw (See IPB Figure 2 - Illustration 8.2-1 - Item 24) towards the caster wheel, until the Brake Pedal (Item 35) stays in the unlocked (raised) position, and requires some force to engage.
3. Lock the Knurled Head Screw (Item 24) in place using the Hex Nut (Item 23).
4. Verify that the brake pedal stays disengaged when towing the stand.

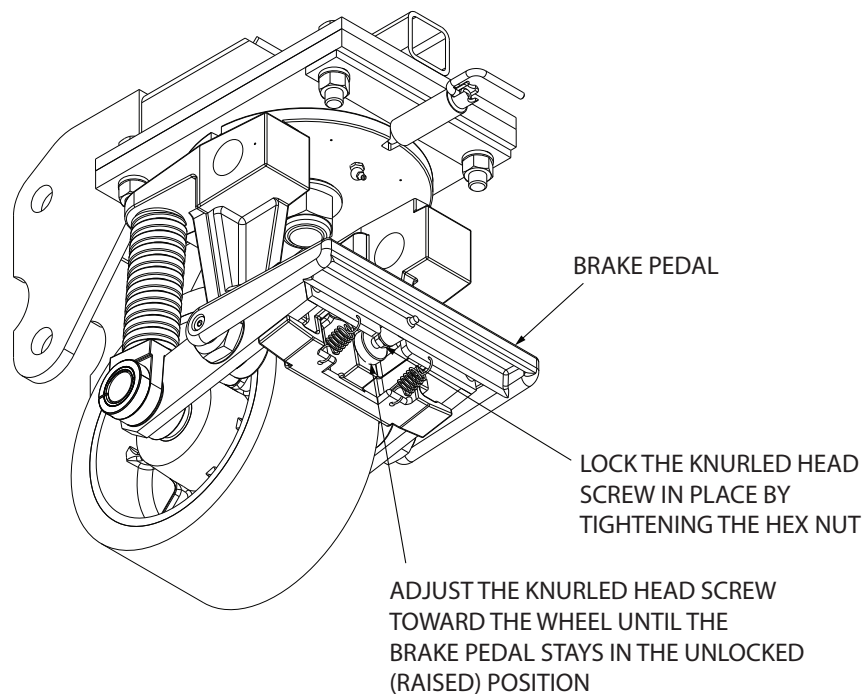


Figure 5.3-1

6.0 – SAFETY

6.1 Stress

Design stress safety factors are compliant with applicable commercial specifications.

6.2 General

Most accidents are the result of violating standard safety rules in operation or improper servicing and maintenance of equipment.

Many safety features have been incorporated into the design to assist in safe operation of this equipment. These items do not fool-proof the equipment nor do they replace the operator's responsibility to operate the equipment in a safe manner.

WARNING

Any deficiency revealed through inspection must be reported to supervisory personnel. A determination must be made prior to resuming operation, as to whether the deficiency constitutes a safety hazard to personnel or equipment.

It is the operator's responsibility to report any deficiencies, unusual noises, or operating conditions to supervisory personnel. It is also the responsibility of the user of this equipment to discontinue use until they are assured that the deficiency has been corrected.

6.3 Prevention

A good preventative maintenance program should include periodic lubrication, adjustment, and immediate correction of defects revealed through inspections. Preventive maintenance will not only contribute to safe operation, but will also extend useful service life as well.

7.0 – Statement of Warranty

7.1 Statement of Warranty

Advanced Ground Systems Engineering LLC (AGSE) warrants to original purchasers that its products will be free of defects in material and workmanship under normal use and conditions for claims received within a period of one year from date of purchase (final billing date), and to the extent that if any AGSE product fails in operation because of such defect, the company will replace or repair, at its option, the defective article. Prior to the repair or replacement of any defective product, the company shall be notified in writing as to the nature of the defect. The company shall assume no liability for freight, disassembly, removal, refitting and installation charges on any article returned unless such charge(s) is approved by AGSE in writing prior to the return. On component items purchased by AGSE for incorporation into an AGSE manufactured product, only the component manufacturer's warranty (if any) shall apply to that component. Said manufacturer's warranty shall be passed on to AGSE's customer to the extent permitted. This warranty is applicable only when AGSE products are operated for intended purposes within the recommended procedures, load limits, properly maintained, not damaged or abused, etc., including as indicated in company manuals, catalogs, and drawings. All warranty claims must be applied for within sixty days from when the defect becomes known. The foregoing warranty is in lieu of all other warranties, or liabilities, either expressed or implied, and AGSE expressly excludes all implied warranties of merchantability and fitness for a particular purpose and all non-infringement warranties as well as disclaims all liabilities to third parties. In no event shall AGSE be liable for any amounts in excess of the purchase price of the product.

NOTICE

Failure to conduct periodic inspections, routine maintenance, or improper operation will result in the voiding of the warranty.

8.0 – Part Breakdown

8.1 General

The following pages can be used in the identification of components used in the product described in this manual. Parts Lists are broken down by “ITEM,” “PART NUMBER,” “QTY,” and “DESCRIPTION.”

NOTICE

“ITEM” numbers are for reference to the Illustrated Parts Breakdown (IPB) only. Do not order replacement parts by “ITEM” number. Order parts by and “PART NUMBER” only.

Purchased parts will reflect a valid part number and source from which the product may be purchased. AGSE does not guarantee availability of purchased parts indefinitely.

8.2 Illustrated Parts Breakdown

IPB Figure 1 – AM-2079-2

Shock Absorbing Swivel Caster Assembly

ITEM	PART NUMBER	QTY	PART DESCRIPTION
	AM-2079-2	-	Shock Absorbing Swivel Caster Assy (Figure 8.1-1)
1	AM-2079-307	2	Side Plate Assy (10" Wheel)
5	AM-2079-900	1	Wheel Fork
7	AM-2079-108	1	Wheel - 10" (10" Dia. - 5" Wide Red Polyurethane Wheel Trew)
10	SCD-1049	2	Compression Spring
13	AGSE-S00119-08C032A08	2	Screw, Socket Head
14	AM-2079-327	2	Spring Load bracket
16	AG101	1	M10 x 45 Degree Grease Fitting
17	AM-2079-701	1	Brake Pad
18	AM-2079-326	4	Extension Spring #145 0.65 OD x 0.065 Wire Dia x 1.5" Lg - SS
19	AGSE-S00118-04C012A33	4	Screw, Socket Head
21	AGSE-S00140-20FA01	1	Nut, Locking
22	AGSE-S00126-05C06S06A33	2	Shoulder Screw
23	AGSE-S00139-06CA01	1	Nut
24	AM-2079-124	1	Knurled Hd Screw - 3/8"-16 x 2" Lg
25	AM-2079-504	1	Spring Brace
26	AM-2079-121	2	Round Tube Spacer - 1018 Steel 1.260" ID x 1-1/2" OD x .710 Lg
27	AM-2079-323	2	Fork Pivot Bolt
28	AM-2079-119	6	Plastic Washer - 1-1/4" ID x 2" OD x 1/32" Thk
33	AM-2079-324	2	Spring Retainer
34	TCL-20-12-FZ	2	Threaded Shaft Collar

IPB Figure 1 – AM-2079-2
Shock Absorbing Swivel Caster Assembly (Continued)

ITEM	PART NUMBER	QTY	PART DESCRIPTION
35	AM-2079-601	1	Brake Pedal
36	AM-2079-1000	1	Mounting Plate Assy
37	AM-2079-105	1	Thrust Bearing
38	AM-2079-319	1	Wheel - Axle
39	LM67000LA	1	Bearing & Seal
40	AM-2079-111	1	Flat Washer
41	AM-2079-149	1	Swivel Lock Assy
42	LM67010	1	Bearing Cup

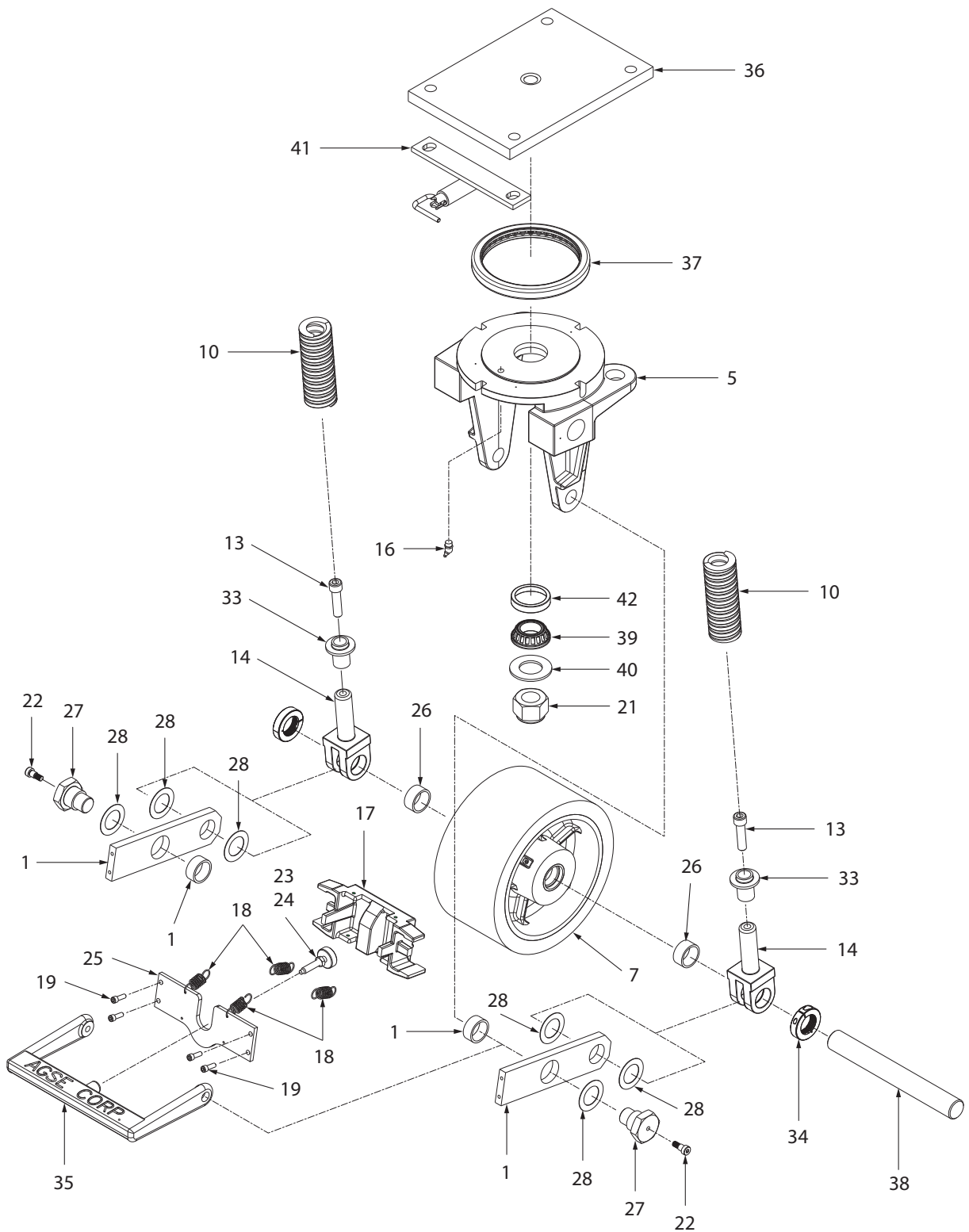


Figure 8.1-1 AM-2079-1/-2 Caster Assembly

IPB Figure 2 – AM-2079-4 Shock Absorbing Swivel Caster Assembly

ITEM	PART NUMBER	QTY	PART DESCRIPTION
	AM-2079-4	-	Shock Absorbing Swivel Caster Assy (Figure 8.2-1)
2	AM-2079-1109	2	Side Plate Assy (12" Wheel)
5	AM-2079-900	1	Wheel Fork
8	AM-2079-208	1	Wheel - 12" (12" Dia. - 5" Wide Red Polyurethane Wheel - 1-1/4"OD TO - Lem Tape Brg Rwn
10	SCD-1049	2	Compression Spring
13	AGSE-S00119-08C032A08	2	Screw, Socket Head
14	AM-2079-327	2	Spring Load bracket
16	AG101	1	M10 x 45 Degree Grease Fitting
17	AM-2079-701	1	Brake Pad
18	AM-2079-326	4	Extension Spring #145 0.65 OD x 0.065 Wire Dia x 1.5" Lg - SS
19	AGSE-S00118-04C012A33	4	Screw, Socket Head
21	AGSE-S00140-20FA01	1	Nut, Locking
22	AGSE-S00126-05C06S06A33	2	Shoulder Screw
23	AGSE-S00139-06CA01	1	Nut
24	AM-2079-124	1	Knurled Hd Screw - 3/8"-16 x 2" Lg
25	AM-2079-504	1	Spring Brace
26	AM-2079-121	2	Round Tube Spacer - 1018 Steel 1.260" ID x 1-1/2" OD x .710 Lg
27	AM-2079-323	2	Fork Pivot Bolt
28	AM-2079-119	6	Plastic Washer - 1-1/4" ID x 2" OD x 1/32" Thk
33	AM-2079-324	2	Spring Retainer
34	TCL 20-12-FZ	2	Threaded Shaft Collar
35	AM-2079-601	1	Brake Pedal

IPB Figure 2 – AM-2079-4
Shock Absorbing Swivel Caster Assembly (Continued)

ITEM	PART NUMBER	QTY	PART DESCRIPTION
36	AM-2079-1000	1	Mounting Plate Assy
37	AM-2079-105	1	Thrust Bearing
38	AM-2079-319	1	Wheel - Axle
39	LM67000LA	1	Bearing & Seal
40	AM-2079-111	1	Flat Washer
41	AM-2079-149	1	Swivel Lock Assy
42	LM67010	1	Bearing Cup

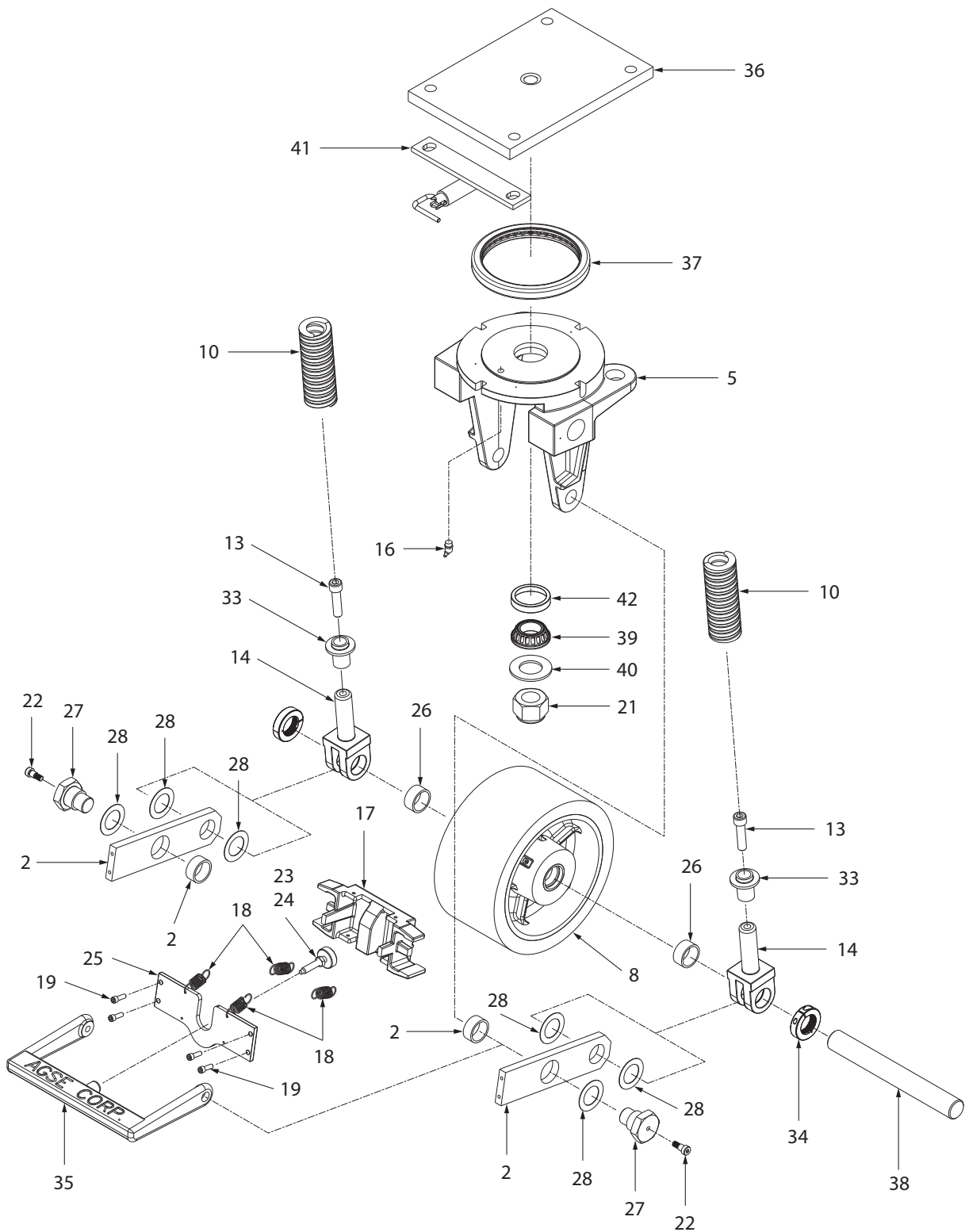


Figure 8.2-1 AM-2079- Caster Assembly

IPB Figure 3 – AM-2079-7 Shock Absorbing Swivel Caster Assembly

ITEM	PART NUMBER	QTY	PART DESCRIPTION
	AM-2079-7	-	Shock Absorbing Swivel Caster Assy (Figure 8.3-1)
3	AM-2079-7-209	1	Side Plate Assy (16" Wheel)
4	AM-2079-7-208	1	Side Plate Assy (16" Wheel) Opposite Side
6	AM-2079-7-501	1	Wheel Fork
9	AM-2079-7-308	1	Wheel - 16" (16" Dia. - 5" Wide Polyurethane Seal - Tapered Roller Bearing - 1-1/4" Bore
11	SCD-1051	4	Compression Spring Round
12	AGSE-S00119-08C052A08	2	Screw, Socket Head
15	AM-2079-7-200	2	Spring Load bracket
16	AG101	1	M10 x 45 Degree Grease Fitting
17	AM-2079-701	1	Brake Pad
18	AM-2079-326	4	Extension Spring #145 0.65 OD x 0.065 Wire Dia. x 1.5" Lg - SS
19	AGSE-S00118-04C012A33	4	Screw, Socket Head
21	AGSE-S00140-20FA01	1	Nut, Locking
22	AGSE-S00126-05C06S06A33	2	Shoulder Screw
23	AGSE-S00139-06CA01	1	Nut
24	AM-2079-124	1	Knurled Hd Screw - 3/8"-16 x 2" Lg
25	AM-2079-504	1	Spring Brace
26	AM-2079-121	2	Round Tube Spacer - 1018 SteelA 1.260" ID x 1-1/2" OD x .710 Lg
27	AM-2079-323	2	Fork Pivot Bolt
28	AM-2079-119	6	Plastic Washer - 1-1/4" ID x 2" OD x 1/32" Thk
33	AM-2079-324	4	Spring Retainer
34	TCL 20-12-FZ	2	Threaded Shaft Collar

IPB Figure 3 – AM-2079-7
Shock Absorbing Swivel Caster Assembly (Continued)

ITEM	PART NUMBER	QTY	PART DESCRIPTION
35	AM-2079-601	1	Brake Pedal
36	AM-2079-1000	1	Mounting Plate Assy
37	AM-2079-105	1	Thrust Bearing
38	AM-2079-319	1	Wheel - Axle
39	LM67000LA	1	Bearing & Seal
40	AM-2079-111	1	Flat Washer
41	AM-2079-149	1	Swivel Lock Assy
42	LM67010	1	Bearing Cup

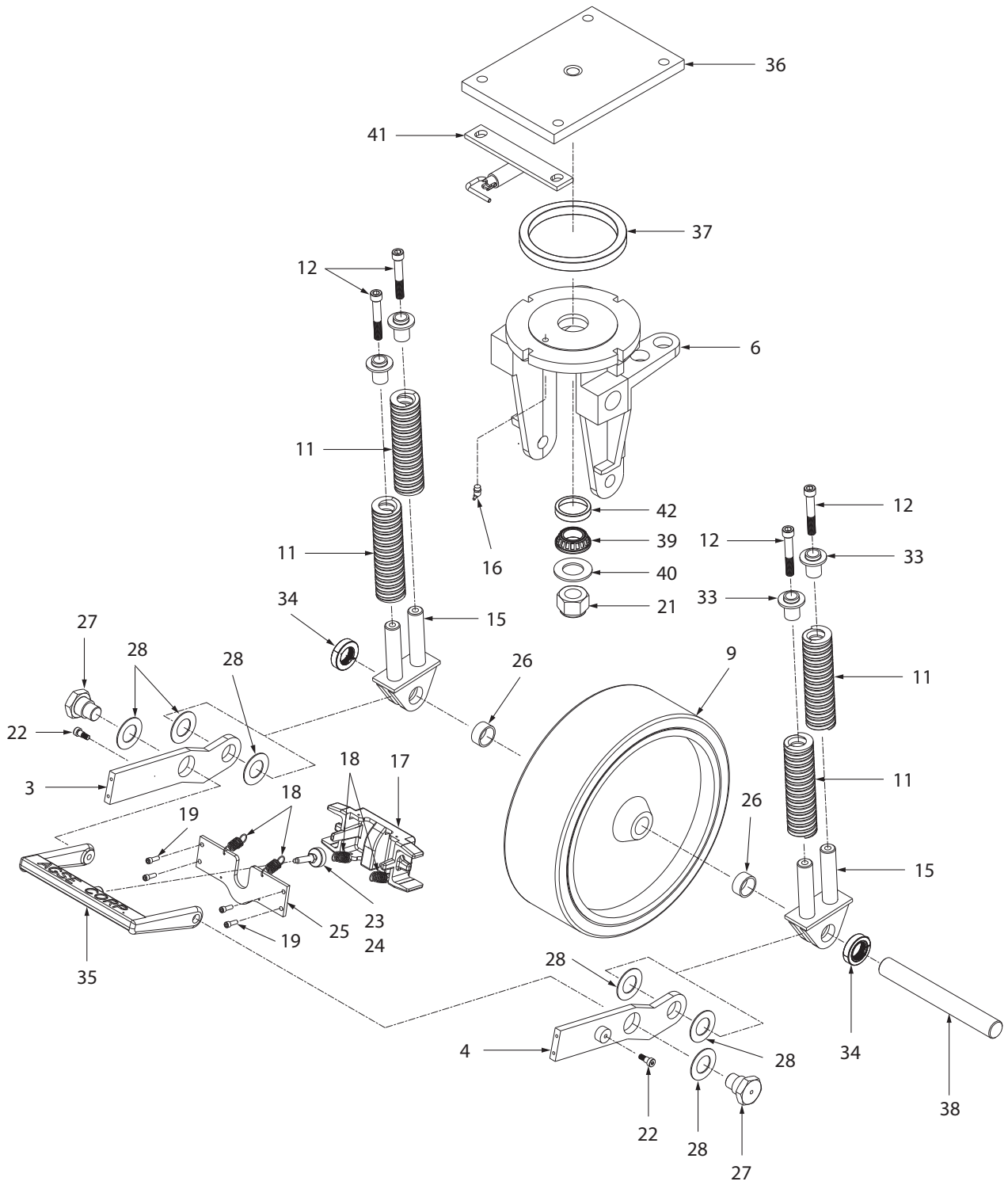


Figure 8.3-1 - AM-2079-7 Caster Assembly

IPB Figure 4 – AM-2079-13

Shock Absorbing Swivel Caster Assembly

ITEM	PART NUMBER	QTY	PART DESCRIPTION
	AM-2079-13	-	Shock Absorbing Swivel Caster Assy <i>For Use With 956A8600 Leap 1B</i> (Figure 8.4-1)
1	AM-2079-307	2	Side Plate Assy (10" Wheel)
7	AM-2079-108	1	Wheel - 10" (10" Dia. - 5" Wide Red Poly Wheel)
10	SCD-1049	2	Round Compression Spring
13	AGSE-S00119-08C032A08	2	Screw, Socket Head
14	AM-2079-327	2	Spring Load Bracket
17	AM-2079-701	1	Brake Pad
18	AM-2079-326	4	Extension Spring #145 0.65 OD x 0.065 Wire Dia. x 1.5" Lg - S.S.
19	AGSE-S00118-04C012A33	4	Screw, Socket Head
21	AGSE-S00140-20FA01	1	Nut, Locking
22	AGSE-S00126-05C06S06A33	2	Shoulder Screw
23	AGSE-S00139-06CA01	1	Nut
24	AM-2079-124	1	Knurled Hd Screw - 3/8"-16 x 2" Lg
25	AM-2079-504	1	Spring Brace
26	AM-2079-121	2	Round Tube Spacer - 1018 Steel 1.260" ID x 1-1/2" OD x .710 Lg
27	AM-2079-323	2	Fork Pivot Bolt
28	AM-2079-119	6	Plastic Washer - 1-1/4" ID x 2" OD x 1/32" Thk
34	TCL 20-12-FZ	2	Threaded Shaft Collar

IPB Figure 4 – AM-2079-13
Shock Absorbing Swivel Caster Assembly (Continued)

ITEM	PART NUMBER	QTY	PART DESCRIPTION
35	AM-2079-601	1	Brake Pedal
37	AM-2079-105	1	Thrust Bearing
38	AM-2079-319	1	Wheel - Axle
39	LM67000LA	1	Bearing & Seal
40	AM-2079-111	1	Flat Washer
42	LM67010	1	Bearing Cup
43	AM-2079-901	1	Wheel Fork
44	AM-2079-1400	1	Mounting Plate
45	AM-2079-1500	1	Caster Swivel Lock
46	AM-2079-1700	1	Add-on Steering Tubes
47	AM-2079-1800	2	Barrel Nut
48	2250K17	1	Male Grease Fitting - Straight M10 x 1mm
49	91263A611	2	FHCS - 1/2"-13 UNC x 2-1/4" - Zinc Plt - Steel
50	AM-2079-1900	2	Spring Guide

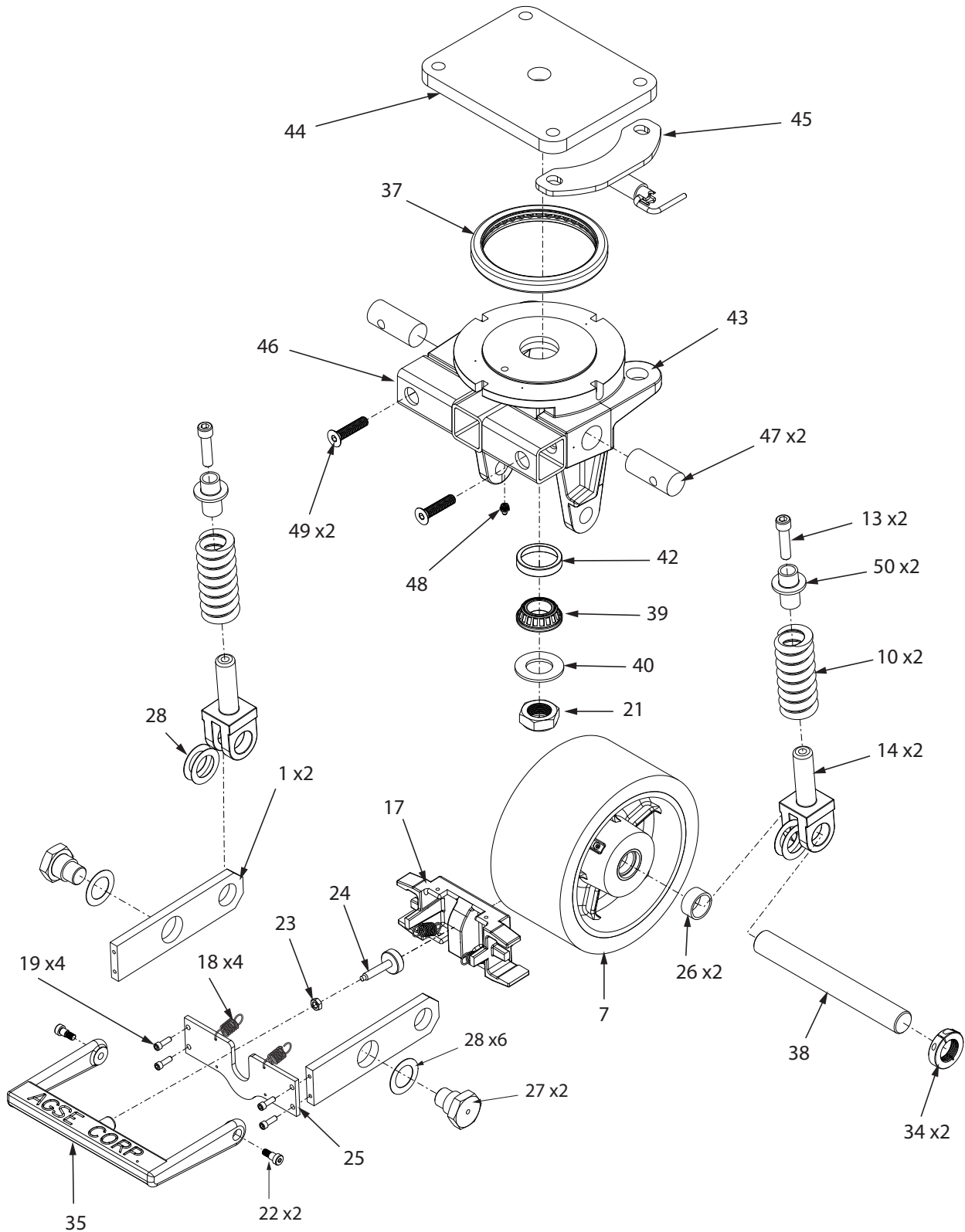


Figure 8.4-1 - AM-2079-13 Caster Assembly - For Use With 956A8600 Leap 1B

IPB Figure 5 – AM-2079-20

Shock Absorbing Swivel Caster Assembly

ITEM	PART NUMBER	QTY	PART DESCRIPTION
	AM-2079-20	-	Shock Absorbing Swivel Caster Assy (Figure 8.5-1)
3	AM-2079-7-209	1	Side Plate Assy (16" Wheel)
4	AM-2079-7-208	1	Side Plate Assy (16" Wheel)
9	AM-2079-7-308	1	Wheel - 16" Dia. x 5" W - Red Poly Wheel
11	SCD-1051	4	Round Compression Spring
12	AGSE-S00119-08C052A08	4	Screw, Socket Head
15	AM-2079-7-200	2	Spring Load Bracket
17	AM-2079-701	1	Brake Pad Casting
18	AM-2079-326	4	Extension Spring
19	AGSE-S00118-04C012A33	4	Screw, Socket Head
21	AGSE-S00140-20FA01	1	Nut, Locking
22	AGSE-S00126-05C06S06A33	2	Shoulder Screw
23	AGSE-S00139-06CA01	1	Nut
24	AM-2079-124	1	Knurled Hd Screw - 3/8"-16 x 2" Lg - Zinc Plt
25	AM-2079-504	1	Spring Brace
26	AM-2079-121	2	Round Tube Spacer - 1018 Steel 1.260" ID x 1-1/2" OD x .710 Lg
27	AM-2079-323	2	Fork Pivot Bolt
28	AM-2079-119	6	Plastic Washer - 1-1/4" ID x 2" OD x 1/32" Thk
33	AM-2079-324	4	Spring Retainer
34	TCL-20-12-FZ	2	Threaded Lock Collar - 1-1/4"-12 UNF x 2-1/16" Zing Plt
35	AM-2079-601	1	Brake Pedal
36	AM-2079-1000	1	Mounting Plate

IPB Figure 5 – AM-2079-20
Shock Absorbing Swivel Caster Assembly (Continued)

ITEM	PART NUMBER	QTY	PART DESCRIPTION
37	AM-2079-105	1	Thrust Bearing
38	AM-2079-319	1	Wheel Axle
39	LM67000LA	1	Bearing & Seal
40	AM-2079-111	1	Flat Washer - 1-1/4" Nominal 1-3/8" ID x 2-1/2 OD
41	AM-2079-149	1	Swivel Lock Assy
42	LM67010	1	Bearing Cup
51	AM-2079-7-501	1	Wheel Fork
52	1105K79	1	Grease Fitting - M10 x 1.0 - 90°
53	AM-2079-2001	1	Steering Tube
54	AM-2079-2002	2	Dowel Nut
55	S00114-10C032A07	2	Screw, Flat Head

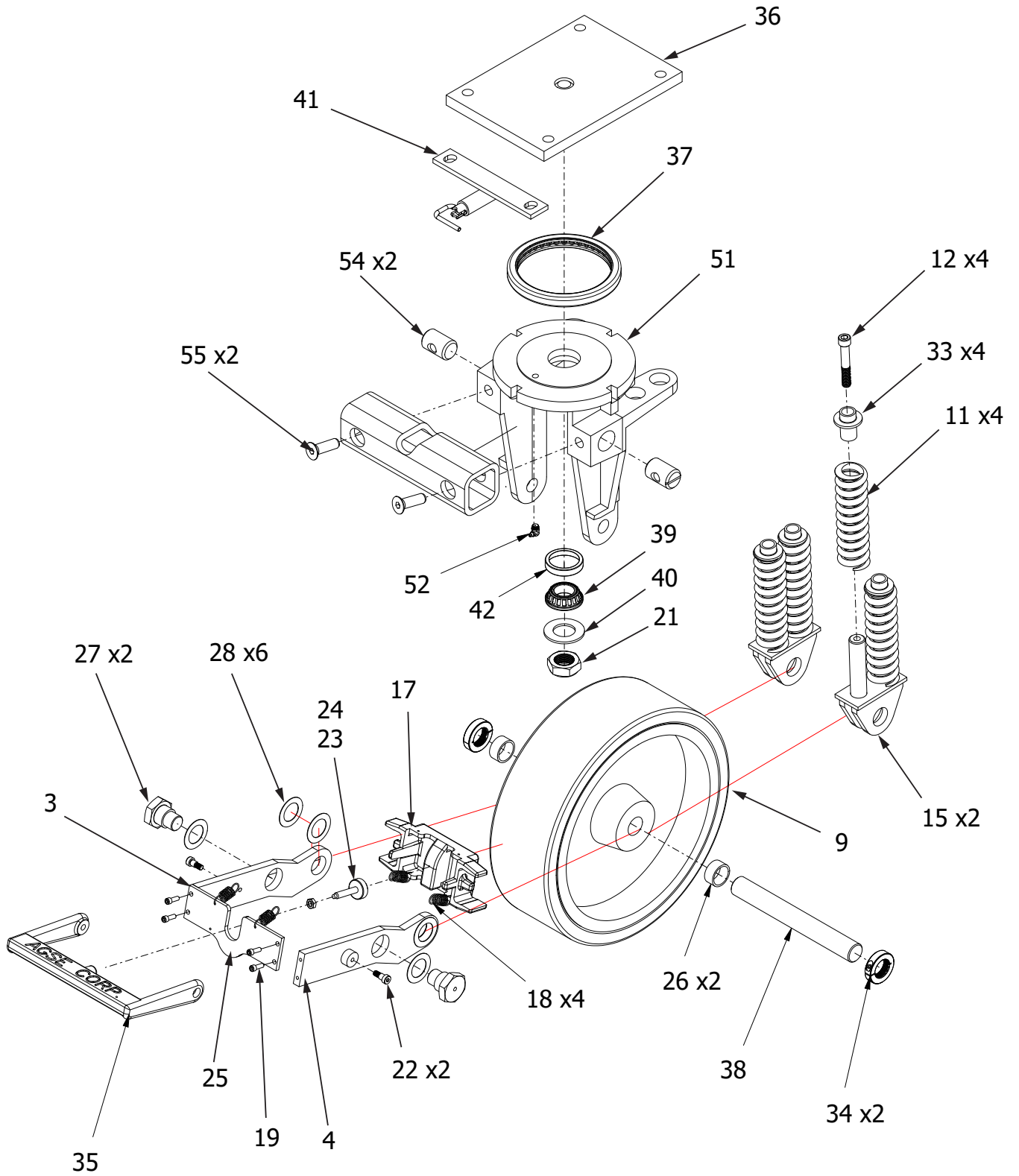


Figure 8.5-1 - AM-2079-20 Caster Assembly

9.0 – Recommended Spares

9.1 Terms

Normal lead time for most items is eight (8) weeks ARO (subject to review at time order is placed), FOB point is our factory in Santa Fe Springs, California. Standard terms are net twenty (20) days. Any prices given are valid for thirty (30) days from date of issuance. Prices do not include any local, state, or federal taxes.

9.2 Critical Items

AGSE defines “critical” items as those items, if broken or missing, that would render the equipment inoperable or severely impair equipment operation. It is AGSE’s recommendation that such items be identified, purchased, and stocked by the customer. In the remote event of “critical” item failure, the equipment can be quickly repaired and placed back in service with minimal down time.

AGSE does not recommend spares for this equipment as no components failure is anticipated for the life of such equipment when used and maintained in a normal manner. AGSE typically stocks all components used with this equipment, and immediate shipment of “critical” items may be possible. AGSE will respond to customer requests for quotation on any spare parts, and expedite orders for spare parts as required, but the customer should never assume immediate delivery is always possible.

Part Number	Qty	Description
AM-2079-601	1	Brake Pedal
AM-2079-105	1	Thrust Bearing
TCL 20-12-FZ	3	Threaded Shaft Collar
AM-2079-149	1	Swivel Lockholder Assy
AM-2079-701	1	Brake Pad
AM-2079-326	4	Extension Spring