



This document contains information proprietary to
ADVANCED GROUND SYSTEMS ENGINEERING LLC
and shall not be reproduced, transferred to other documents, disclosed to others, or used for
any purpose other than that for which it is furnished without the prior written permission of
Advanced Ground Systems Engineering LLC.

AGSE-T016-G08

AGSE-T016-G12

Pedestal Set

AGSE-T016-G08 For V2500-A1/-A5 Engines
AGSE-T016-G12 For CF6-80A/-80C2 Engines

ORIGINAL MANUAL DATED 06/01/2021

LATEST MANUAL REVISION LEVEL 08/18/2023 (REV B)

ADVANCED GROUND SYSTEMS ENGINEERING LLC

10805 Painter Ave., Santa Fe Springs, CA, 90670 • PHONE: 562-906-9300 • FAX: 562-906-9308 • E-MAIL: agse@agsecorp.com

NOTICE

1. Alteration, Modification, Reengineering, or Reproduction of Equipment

The alteration, modification, reengineering, or reproduction of AGSE equipment and/or parts is not permitted without prior written authorization from AGSE.

These modifications include but are not limited to:

- Structural changes to AGSE-supplied parts
- Substitution of AGSE-supplied parts, including hardware, with an alternate source or supplier
- Reverse engineering of AGSE equipment and parts.

Requests for modifications should be submitted to AGSE for review – please send modification requests to support@agsecorp.com.

Once reviewed by our Engineering team, a Customer Support Letter (Subject: No Technical Objection) will be issued for any approved modifications.

NOTE

Modifications executed without prior authorization by AGSE may result in a non-compliant product that is unsafe for operation.

Unauthorized modifications void AGSE's and the OEM's (Engine and/or Airframer) approval and authority to use the product for its intended application.

INDEX

SECTION	DESCRIPTION	PAGE(S)
1.0	Revisions	1.0
2.0	Illustration	2.0
3.0	Specification	3.0
3.0	3.1 General	3.0
3.0	3.2 Mobility	3.0
3.0	3.3 Design	3.0
3.0	3.4 Fabrication and Finish	3.0
3.0	3.5 Characteristics	3.0
4.0	Maintenance and Inspection	4.0
4.0	4.1 General	4.0
4.0	4.2 Cleaning and Painting	4.0
4.0	4.3 Scheduled Service	4.0
4.0	4.4 Scheduled Inspection	4.0
5.0	Operation	5.0
5.0	5.1 V2500-A1/-A5 Engine Installation	5.0
5.0	5.2 CF6-80A/-80C2 Engine Installation	5.1
6.0	Safety	6.0
6.0	6.1 Stress	6.0
6.0	6.2 General	6.0
6.0	6.3 Prevention	6.0
7.0	Warranty	7.0
7.0	7.1 Statement of Warranty	7.0
8.0	Parts Breakdown	8.0
8.0	8.1 General	8.0
8.0	8.2 Illustrated Parts Breakdown (IPB)	8.0
8.0	IPB Figure 1- AGSE-T016-G08 Pedestal Set for V2500-A1/-A5	8.1
8.0	IPB Figure 2 - AGSE-T01614-S08 Engine Adapter Assembly	8.2
8.0	IPB Figure 3 - AGSE-T01612-S01 V2500-A1/-A5 Forward Adapter LH	8.3
8.0	IPB Figure 4 - AGSE-T01612-S02 V2500-A1/-A5 Forward Adapter RH	8.4
8.0	IPB Figure 5 - AGSE-T01612-S03 V2500-A1/-A5 Aft Adapter	8.5
8.0	IPB Figure 6 - AGSE-T01615-S08 Pedestal Assembly - 46 7/8" Height	8.6
8.0	IPB Figure 7 - AGSE-T01616-S01 Pedestal Assembly - 8 7/8" Height	8.7
8.0	IPB Figure 8 - AGSE-T01615-S05 Pedestal Assembly - 56" Height	8.8
8.0	IPB Figure 9 - AGSE-T01616-S03 Pedestal Assembly - 13" Height	8.9
8.0	IPB Figure 10- AGSE-T016-G12 Pedestal Set for CF6-80A/80C2	8.10
8.0	IPB Figure 11- ASGE-T01615-S01 Pedestal Assembly - 55 7/8" Height	8.11
8.0	IPB Figure 12- ASGE-T01615-S02 Pedestal Assembly - 40" Height	8.12
8.0	IPB Figure 13- ASGE-T01614-S12 Adapter Assembly - CF6-80A/80C2	8.13
9.0	Stencils, Decals, and Placards	9.0
9.0	9.1 General	9.0
9.0	9.2 Stencils and Placards	9.0
10.0	Recommended Spare Parts List	10.0
10.0	10.1 Critical Items	10.0

1.0 – Revisions

The following is an itemized record of all changes in this current revision.

PAGE	REV	DESCRIPTION OF CHANGE	DATE
8.3	B	Updated Item 2, 8, 9, 10 & 11 Part Number	08/18/2023
8.4	B	Updated Item 2, 8, 9, 10 & 11 Part Number	08/18/2023
8.7	B	Updated Item 2, 3, 4, 5 & 6 Part Number	08/18/2023
8.9	B	Updated Item 2, 3, 4, 5 & 6 Part Number	08/18/2023
8.11	B	Updated Item 5 & 6 Part Number	08/18/2023
8.12	B	Updated Item 5 & 6 Part Number	08/18/2023
8.13	B	Updated Item 5, 6, 7, 8 & 9 Part Number	08/18/2023
10.0	B	Updated Item Part Number	08/18/2023

2.0 – Illustration

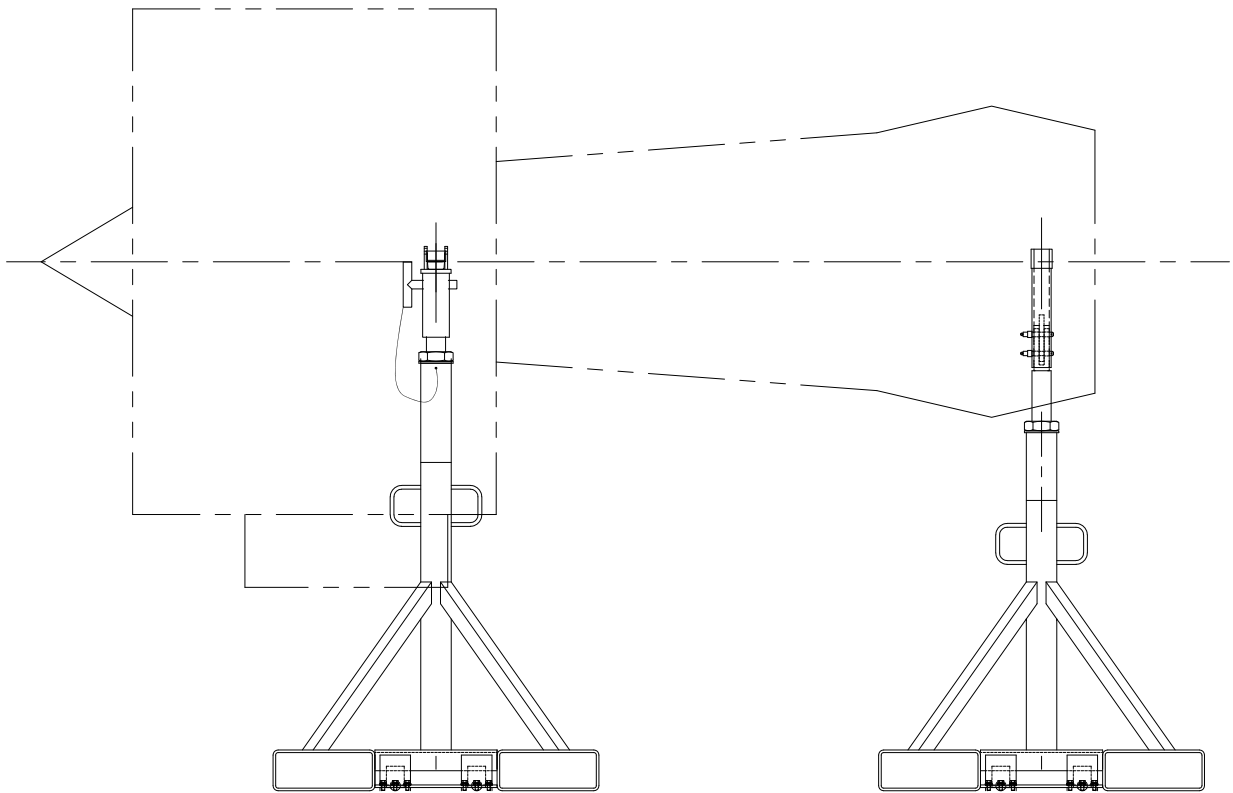


Figure 2.0-1. AGSE-T016-G08 Pedestal Arrangement with V2500-A1/-A5 Engine

2.0 – Illustration

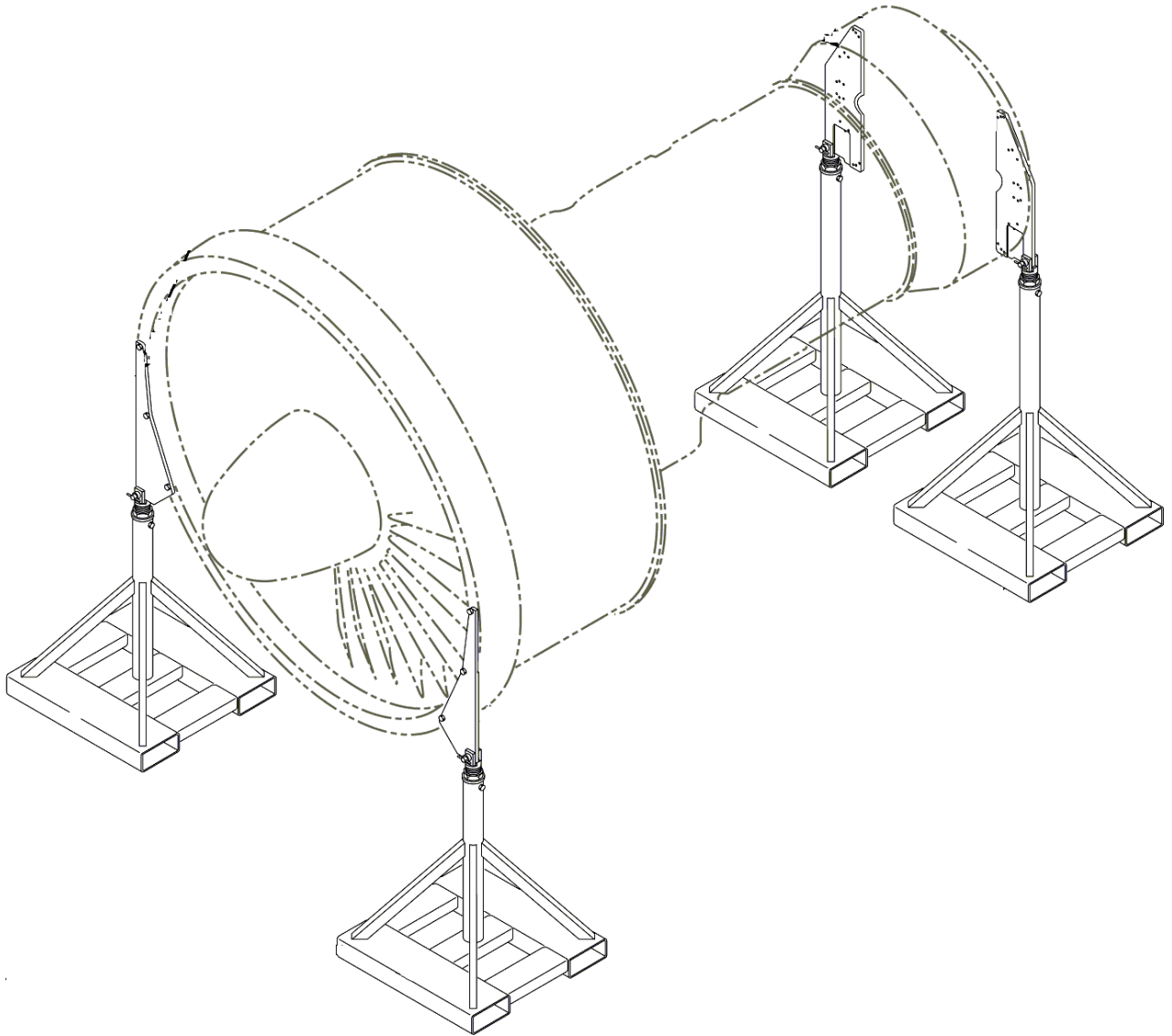


Figure 2.0-2. *AGSE-T016-G12 Pedestal Arrangement with CF6-80A/80C2 Engine*

3.0 – Specification

3.1 General

The AGSE-T016-G08 Pedestal Set is designed to support V2500-A1/A5 engine for storage or engine build-up. The pedestals consist of sets of two each (46 7/8” [forward] and 56”[aft]) with engine adapters. The pedestals interface with the V2500-A1/A5 engines at ground handling points on the fan case and the aft LPT flange (requires removal of the primary nozzle).

The AGSE-T016-G12 Pedestal Set is designed to support General Electric CF6-80A/80C2 for storage or engine build-up. The pedestals consist of sets of two each (40” [forward] and 55 7/8”[aft]) with engine adapters. The pedestals interface with the CF6-80A/80C2 engines at ground handling points on the fan case and the aft LPT flange (requires removal of the primary nozzle).

3.2 Mobility

The pedestals are forkliftable, but should be positioned to engine manually using two people.

3.3 Design

The pedestals consist of a steel welded assembly with removable steel mounts compatible with the applicable engine.

3.4 Fabrication and Finish

The pedestals are fabricated from steel shapes. All bolted connections use A325 structural bolts or SAE Grade 5 commercial hardware. Unit is primed and painted with high-grade, Skydrol resistant enamel, with color optional. Pins and miscellaneous hardware are manufactured from corrosion resistant materials, or plated as required.

3.5 Characteristics

3.5-1 AGSE-T016-G08

Note: Figures are without engine mounts or hardware.

Length (in.)	36
Width (in.)	36
Height (in.)	46 7/8 and 56
Engine CL Height (in.)	72
46 7/8” Pedestal Weight (Lbs.)	324
56” Pedestal Weight (Lbs.)	335

3.5-2 AGSE-T016-G12

Note: Figures are without engine mounts or hardware.

Length (in.)	36
Width (in.)	36
Height (in.)	40 and 55 7/8
Engine CL Height (in.)	72
40" Pedestal Weight (Lbs.)	310
56" Pedestal Weight (Lbs.)	335

4.0 – Maintenance and Inspection

4.1 General

Life expectancy of this equipment can be extended if it is properly maintained. By design, there is only minimal periodic servicing required. Annual inspections for damage, weld cracks, and corrosion are recommended. Prior to each use, the pedestal set should be inspected for obvious signs of abuse or damage. Observed damage should require complete inspection of the affected area to ensure structural integrity is not compromised.

4.2 Cleaning and Painting

The pedestal set should be cleaned with a soap and water solution and rinsed thoroughly. Damaged paint should be touched-up with Skydrol resistant high-grade enamel paint. Superficial scratches are expected during normal usage and will not affect function.

4.3 Scheduled Service

~ THIS SECTION NOT APPLICABLE ~

4.4 Scheduled Inspection

CAUTION

Prior to each use, the pedestal set should be inspected for obvious signs of abuse or damage. Observed damage should require complete inspection of the affected area to ensure the structural integrity is not compromised.

Annual inspections of machined surfaces, pins, fasteners, and support structure are recommended. The machined surfaces are to be visually inspected for signs of wear or corrosion. Action is to be taken immediately if areas are determined to be potentially dangerous for personnel, or a detriment to the equipment. Pins and fasteners are to be visually inspected for cracks, damage, or corrosion. Loose fasteners should be tightened. The pedestal structure is to be visually inspected for damage, weld cracks, and corrosion.

CAUTION

AGSE recommends periodic load testing of the pedestals as shown in figure 4.4-1 and 4.4-2.

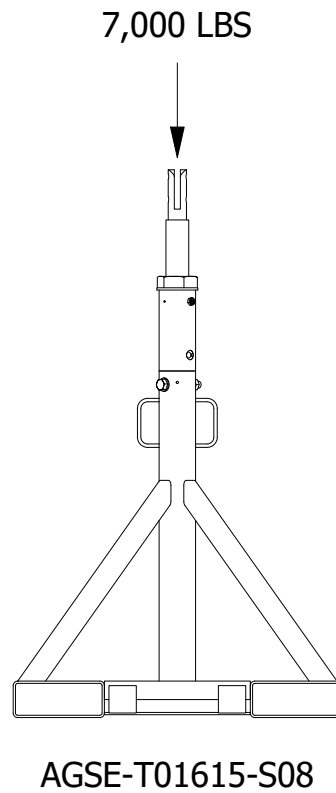
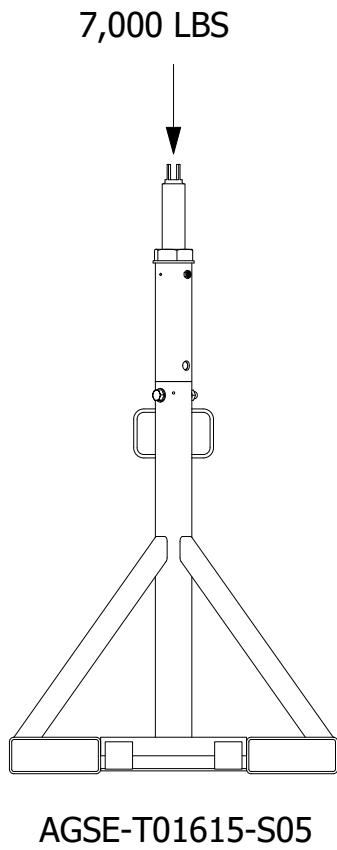
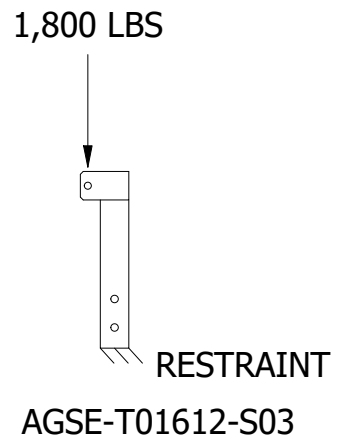
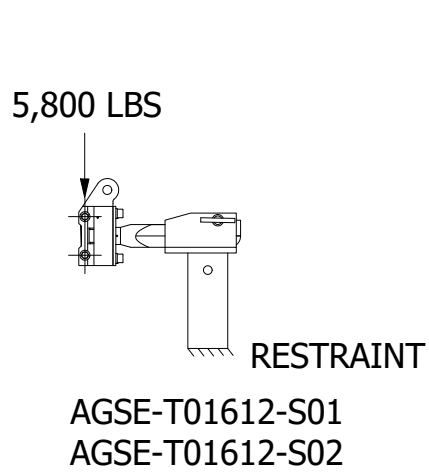


Figure 4.4-1. Proof Load Diagram for AGSE-T016-G08.

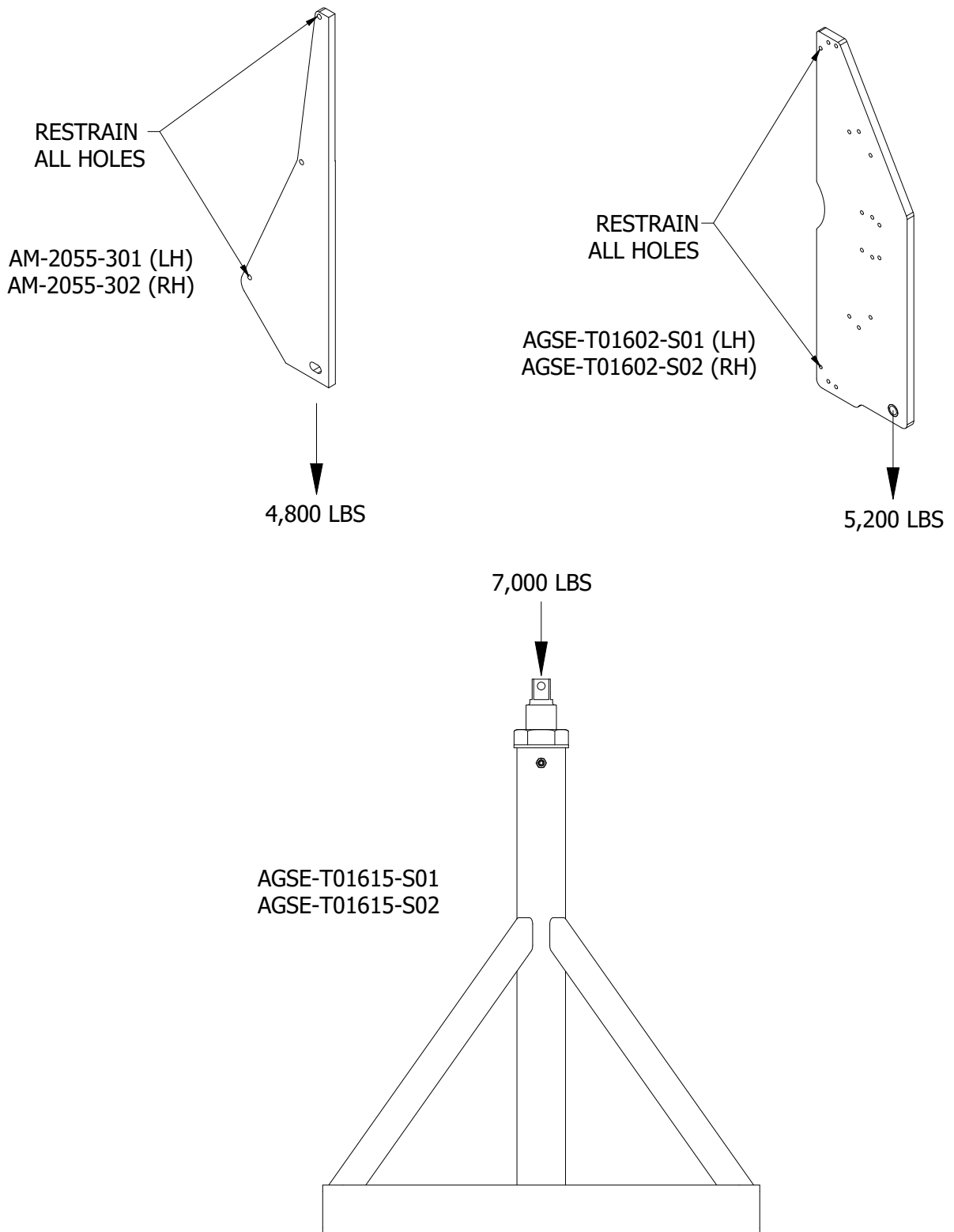


Figure 4.4-2. Proof Load Diagram for AGSE-T016-G12.

5.0 – Operation

5.1 V2500-A1/-A5 Engine Installation

- 1) Visually inspect pedestals for damage.
- 2) Install the applicable mounts onto engine (see Figures 5.1-1). Install any safety clips after pins are inserted.

CAUTION

The primary nozzle must be removed prior to installing the aft adapters.

- 3) Position pedestals beneath suspended engine.

WARNING

**Care must be taken when working near suspended loads.
Personnel should never stand beneath the suspended load.**

- 4) Adjust the AGSE-T01601-P03 threaded assembly on AGSE-T01615-S05 to reach the desired height as required.
- 5) Adjust the AGSE-T01604-P03 threaded assembly on AGSE-T01615-S08 to reach the desired height as required.
- 6) Lower engine until the pedestals support engine weight.
- 7) Remove engine sling.

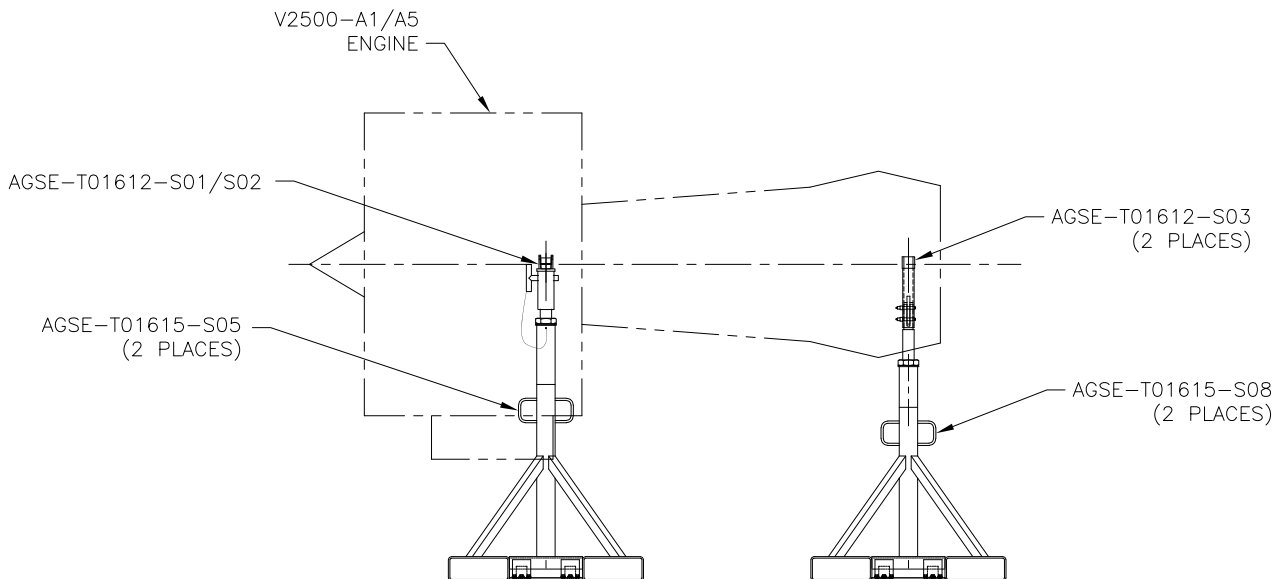


Figure 5.1-1

5.2 CF6-80A/80C2 Engine Installation

- 1) Visually inspect pedestals for damage.
- 2) Install the applicable mounts onto engine using the hardware provided (see Figures 5.2-1 thru 5.2-2). Note the hole patterns for the aft mounts in Figure 5.2-2. Install any safety clips after pins are inserted.

CAUTION

The primary nozzle must be removed prior to installing the aft adapters.

- 3) Position pedestals beneath suspended engine.

WARNING

Care must be taken when working near suspended loads. Personnel should never stand beneath the suspended load.

- 4) Adjust the AGSE-T01601-P03 threaded assembly to reach the desired height as required.
- 5) Lower engine until the pedestals support engine weight.
- 6) Remove engine sling.

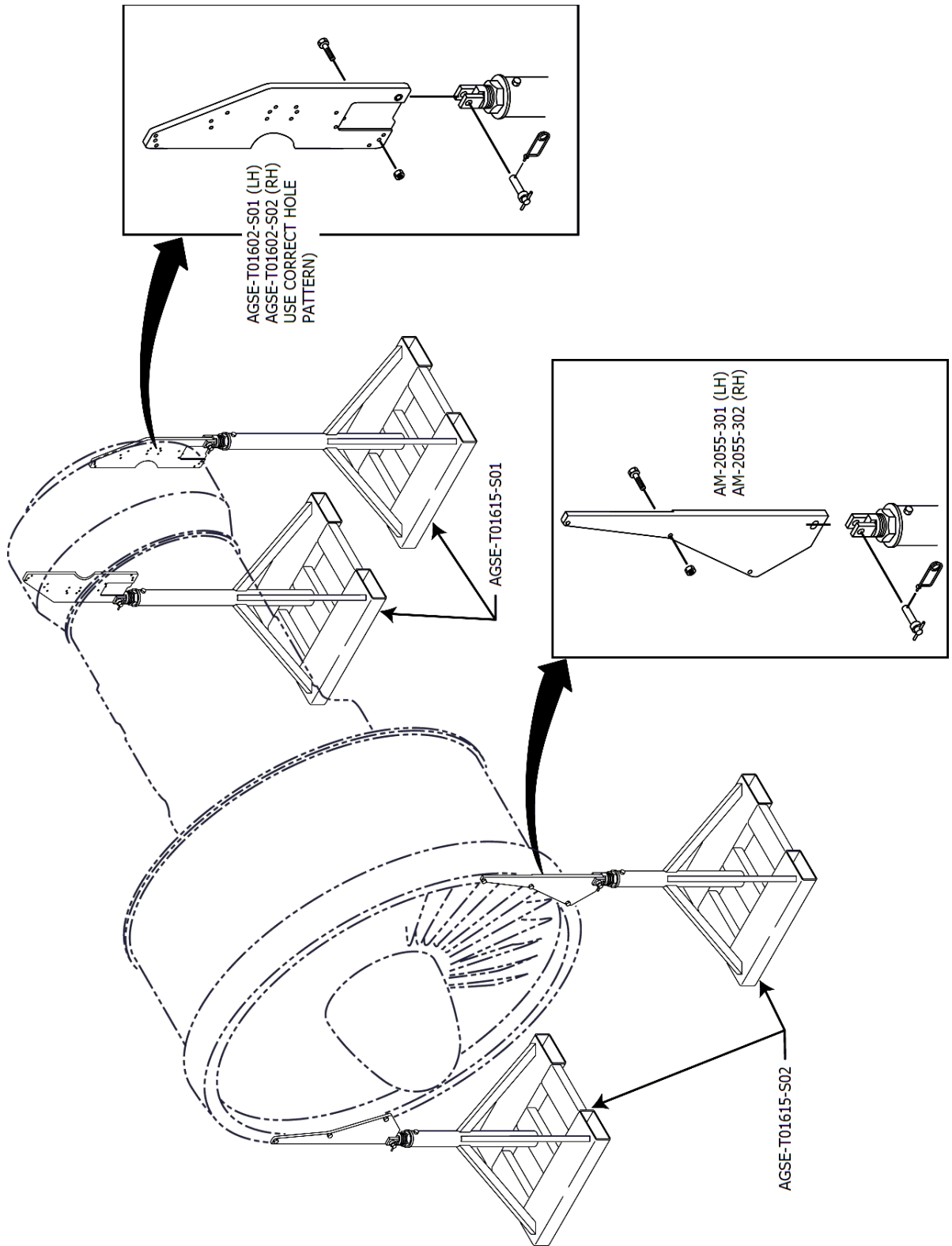


Figure 5.2-1. CF6-80A/80C2 Pedestal Set Arrangement.

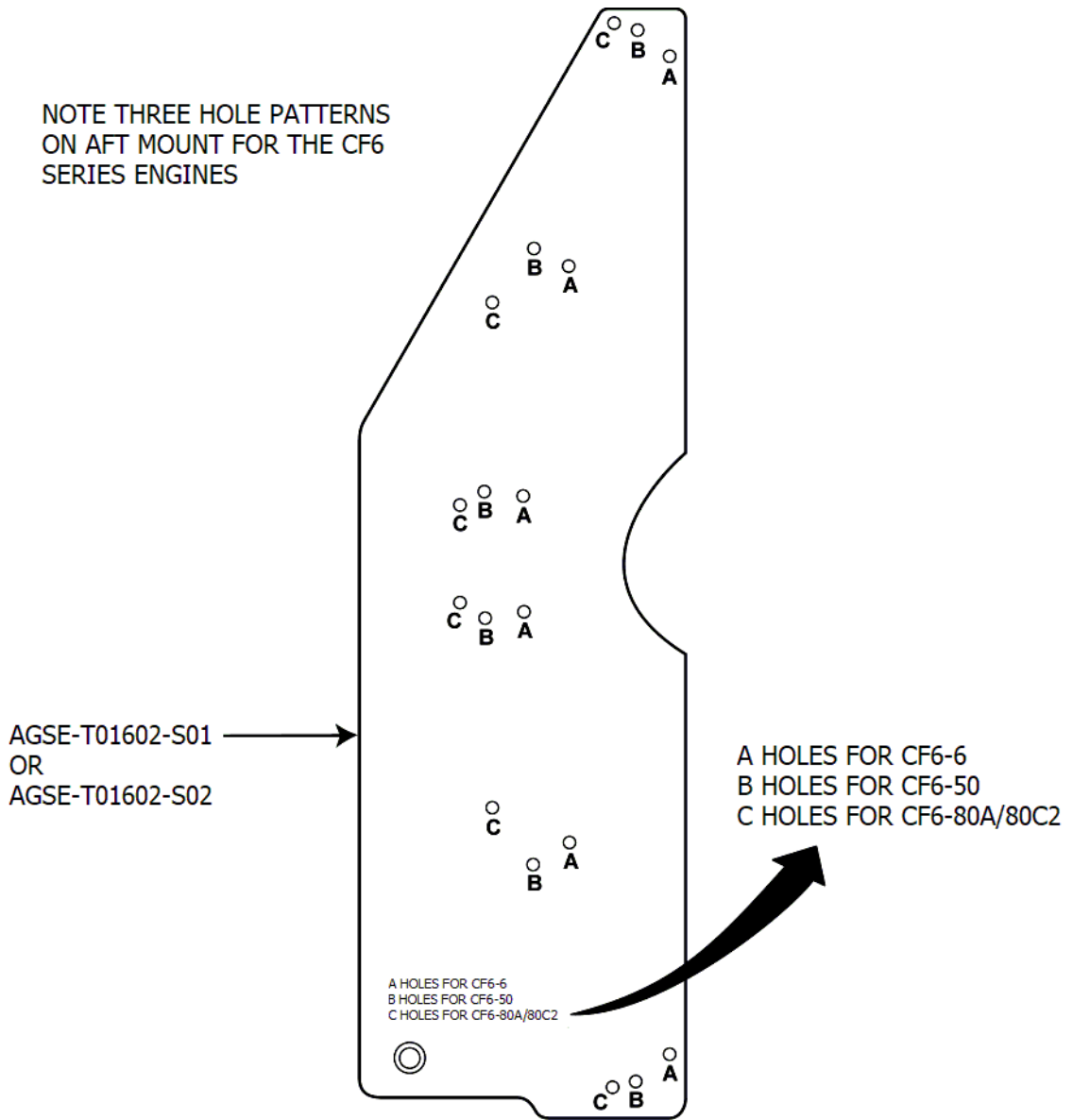


Figure 5.2-2. CF6 Aft Mount Hole Patterns.

6.0 – SAFETY

6.1 Stress

Design stress safety factors are compliant with applicable commercial standard specifications.

6.2 General

Most accidents are the result of violating standard safety rules in operation or improper servicing and maintenance of equipment.

Many safety features have been incorporated into the design to assist in safe operation of this equipment. These items do not fool-proof the equipment nor do they replace the operator's responsibility to operate the equipment in a safe manner.

6.3 Prevention

A good preventative maintenance program should include periodic lubrication, adjustment, and immediate correction of defects revealed through inspections. Preventive maintenance will not only contribute to safe operation, but will also extend useful service life as well.

7.0 – Statement of Warranty

7.1 Statement of Warranty

Advanced Ground Systems Engineering LLC (AGSE) warrants to original purchasers that its products will be free of defects in material and workmanship under normal use and conditions for claims received within a period of one year from date of purchase (final billing date), and to the extent that if any AGSE product fails in operation because of such defect, the company will replace or repair, at its option, the defective article. Prior to the repair or replacement of any defective product, the company shall be notified in writing as to the nature of the defect. The company shall assume no liability for freight, disassembly, removal, refitting and installation charges on any article returned unless such charge(s) is approved by AGSE in writing prior to the return. On component items purchased by AGSE for incorporation into an AGSE manufactured product, only the component manufacturer's warranty (if any) shall apply to that component. Said manufacturer's warranty shall be passed on to AGSE's customer to the extent permitted. This warranty is applicable only when AGSE products are operated for intended purposes within the recommended procedures, load limits, properly maintained, not damaged or abused, etc., including as indicated in company manuals, catalogs, and drawings. All warranty claims must be applied for within sixty days from when the defect becomes known. The foregoing warranty is in lieu of all other warranties, or liabilities, either expressed or implied, and AGSE expressly excludes all implied warranties of merchantability and fitness for a particular purpose and all non-infringement warranties as well as disclaims all liabilities to third parties. In no event shall AGSE be liable for any amounts in excess of the purchase price of the product.

NOTICE

Failure to conduct periodic inspections, routine maintenance, or improper operation will result in the voiding of the warranty.

8.0 – Part Breakdown

8.1 General

The following pages can be used in the identification of components used in the product described in this manual. Parts Lists are broken down by “ITEM,” “PART NUMBER,” “QTY,” and “DESCRIPTION.”

NOTICE

“ITEM” numbers are for reference to the Illustrated Parts Breakdown (IPB) only. Do not order replacement parts by “ITEM” number. Order parts by and “PART NUMBER” only.

8.2 Illustrated Parts Breakdown

IPB Figure 1 - AGSE-T016-G08 Pedestal Set for V2500-A1/-A5

ITEM	PART NUMBER	QTY	PART DESCRIPTION
	AGSE-T016-G08	-	Pedestal Set for V2500-A1/A5 (Illustration Figure 8.1-1)
1.	AGSE-T01614-S08	1	Engine Adapter Assembly (V2500-A1/-A5) (See Detail in IPB Figure 2)
2.	AGSE-T01615-S08	2	Pedestal Assembly, 46 7/8" Height (See Detail in IPB Figure 6)
3.	AGSE-T01615-S05	2	Pedestal Assembly, 56" Height (See Detail in IPB Figure 8)
4.	AGSE-T01613-S01	16	Ball Transfer Assembly (Optional)

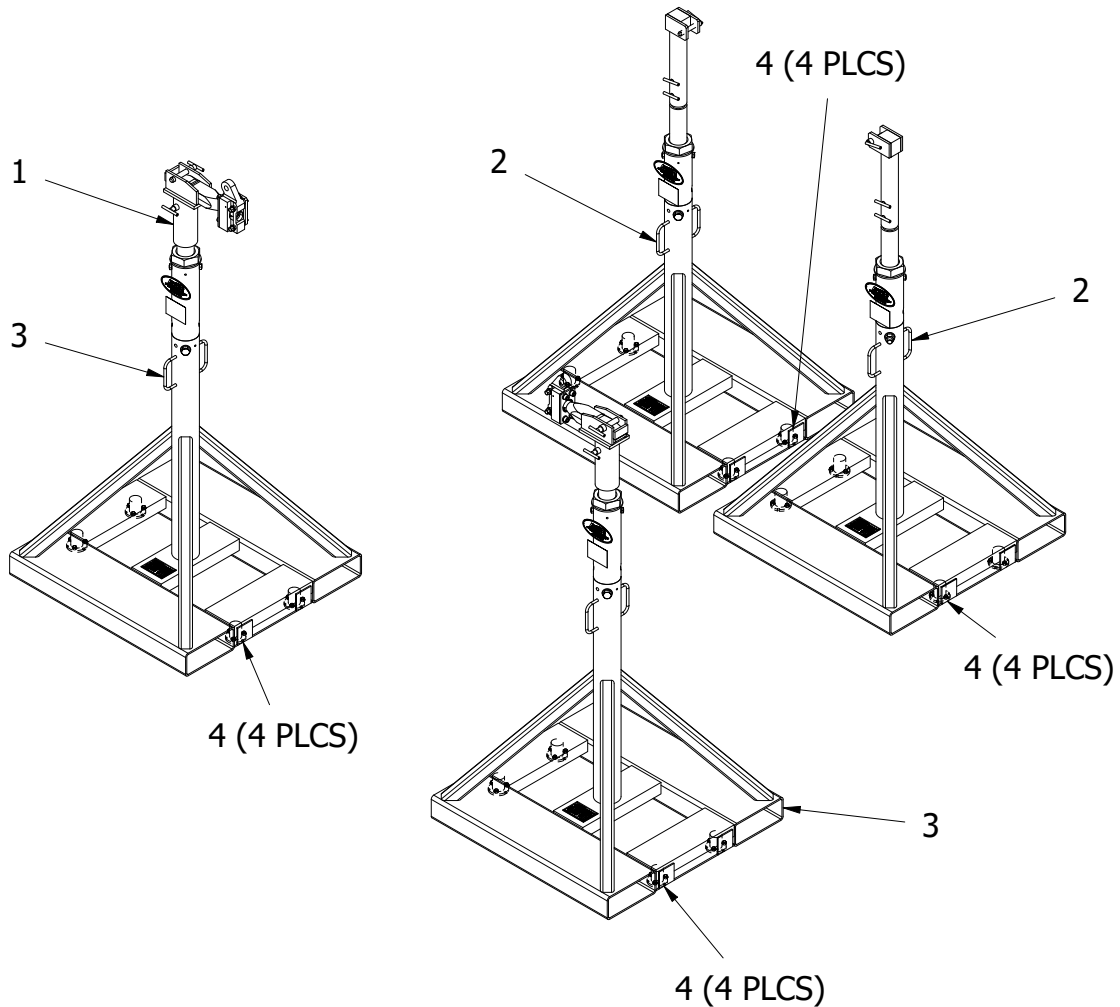


Figure 8.1-1. Pedestal Assembly for V2500-A1/-A5

IPB Figure 2 - AGSE-T01614-S08 Engine Adapter Assembly (V2500-A1/-A5)

ITEM	PART NUMBER	QTY	PART DESCRIPTION
	AGSE-T01614-S08	-	Engine Adapter Assembly (V2500-A1/-A5) (Illustration Figure 8.2-1)
1.	AGSE-T01612-S01	1	V2500-A1/-A5 Forward Adapter LH (See Detail in IPB Figure 3)
2.	AGSE-T01612-S02	1	V2500-A1/-A5 Forward Adapter RH (See Detail in IPB Figure 4)
3.	AM-90625-55T	2	Safety Pin Assembly
4.	AGSE-T01612-S03	2	V2500-A1/-A5 Aft Adapter (see Detail in IPB Figure 5)
5.	AM-90625-34TNC	4	Safety Pin

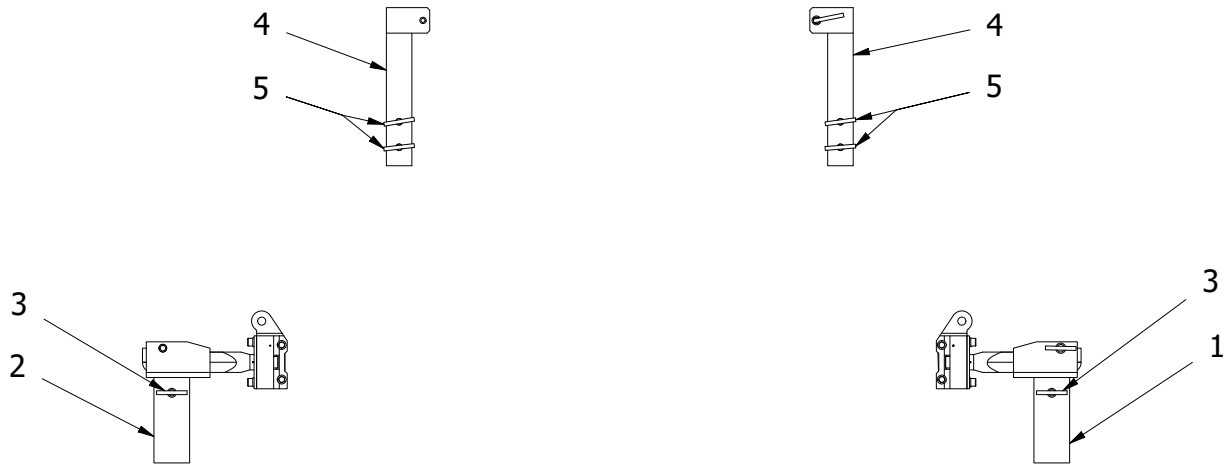


Figure 8.2-1 Engine Adapter Assembly (V2500-A1/-A5)

IPB Figure 3 - AGSE-T01612-S01 V2500-A1/-A5 Forward Adapter LH

ITEM	PART NUMBER	QTY	PART DESCRIPTION
	AGSE-T01612-S01	-	V2500-A1/-A5 Forward Adapter LH (Illustration Figure 8.3-1)
1.	AGSE-T01611-P01	1	V2500-A1/-A5 Forward Adapter
2	AGSE-S00170-125D016A05	1	Slotted Spring Pin
3	AM-2228-A10	1	Mount Assembly LH Side Only
5	AM-90750-49T	1	Safety Pin
6	AM-2228-C8	1	Forward Mount Shaft
7	AM-2228-E6	1	Retainer Plate
8	AGSE-S00118-08C016A08	4	Screw, Socket Head
9	AGSE-S00135-08A17	4	Washer, Locking
10	AGSE-S00184-P03	1	Spherical Bearing
11	AM-2228-M8	1	Washer
12	AGSE-S00118-12C032A01	1	Screw, Socket Head

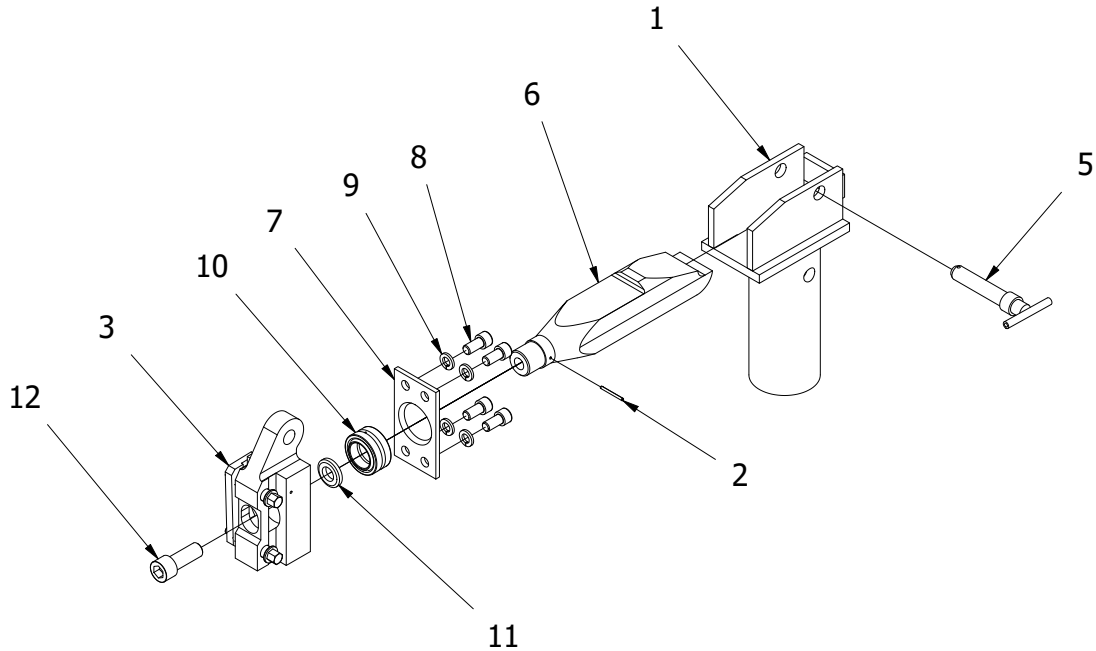


Figure 8.3-1 V2500-A1/-A5 Forward Adapter LH

IPB Figure 4 - AGSE-T01612-S02 V2500-A1/-A5 Forward Adapter RH

ITEM	PART NUMBER	QTY	PART DESCRIPTION
	AGSE-T01612-S02	-	V2500-A1/-A5 Forward Adapter RH (Illustration Figure 8.4-1)
1.	AGSE-T01611-P01	1	V2500-A1/-A5 Forward Adapter
2	AGSE-S00170-125D016A05	1	Slotted Spring Pin
4	AM-2228-A10	1	Mount Assembly RH Side Only
5	AM-90750-49T	1	Safety Pin
6	AM-2228-C8	1	Forward Mount Shaft
7	AM-2228-E6	1	Retainer Plate
8	AGSE-S00118-08C016A08	4	Screw, Socket Head
9	AGSE-S00135-08A17	4	Washer, Locking
10	AGSE-S00184-P03	1	Spherical Bearing
11	AM-2228-M8	1	Washer
12	AGSE-S00118-12C032A01	1	Screw, Socket Head

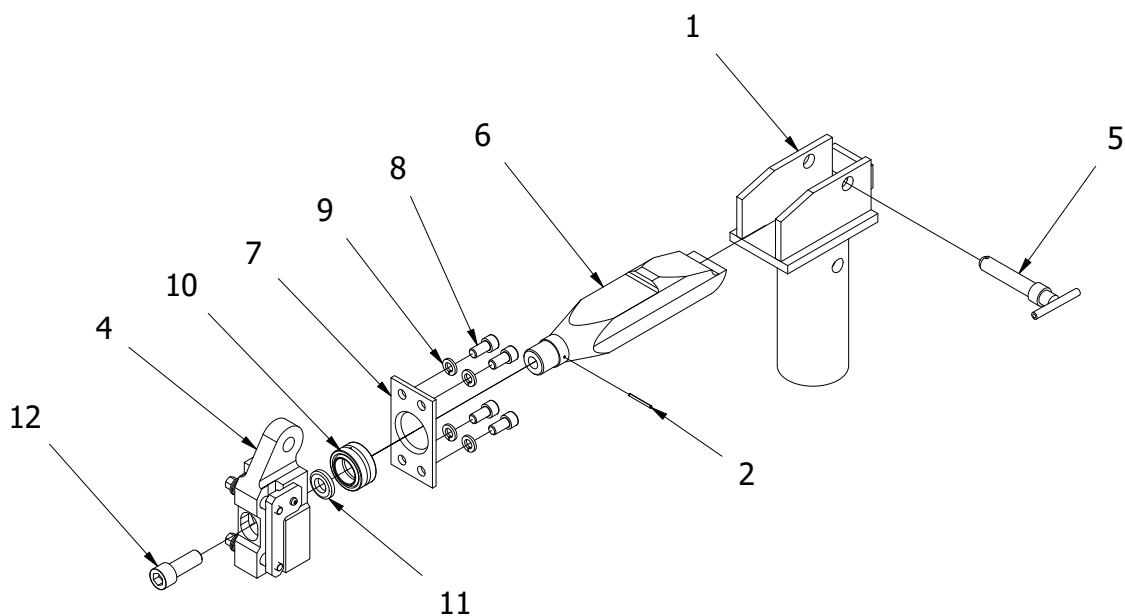


Figure 8.4-1 V2500-A1/-A5 Forward Adapter RH

IPB Figure 5 - AGSE-T01612-S03 V2500-A1/-A5 Aft Adapter

ITEM	PART NUMBER	QTY	PART DESCRIPTION
	AGSE-T01612-S03	-	V2500-A1/-A5 Aft Adapter (Illustration Figure 8.5-1)
1	AGSE-T01611-P02	1	V2500-A1/-A5 Forward Adapter
2	AM-2228-K8	1	Safety Pin

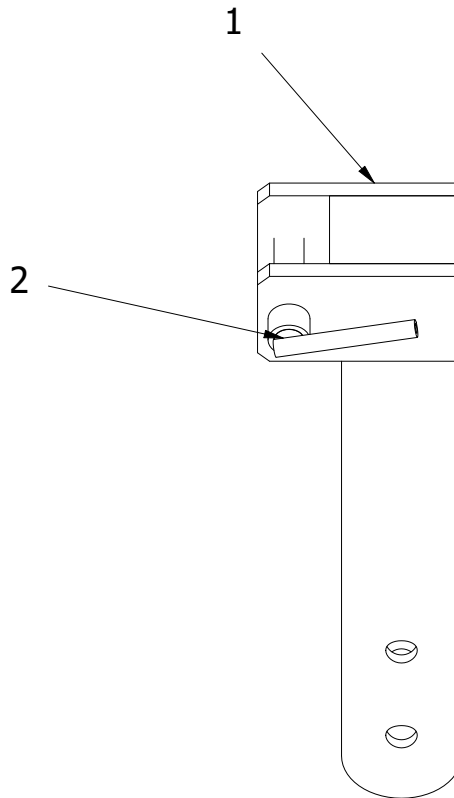


Figure 8.5-1 V2500-A1/-A5 Forward Adapter LH

IPB Figure 6 - AGSE-T01615-S08 Pedestal Assembly - 46 7/8" Height

ITEM	PART NUMBER	QTY	PART DESCRIPTION
	AGSE-T01615-S08	-	Pedestal Assembly - 46 7/8" Height (Illustration Figure 8.6-1)
1.	AGSE-T01603-P03	1	Pedestal - 38"
2.	AGSE-T01616-S01	1	Pedestal Adapter - 8 7/8" Height (See Detail in IPB Figure 7)
3.	AGSE-T01601-P05	1	Thrust Washer
4.	AGSE-T01601-P04	1	Adjuster Nut
5.	AGSE-T01604-P03	1	Threaded Tube & Clevis Assembly

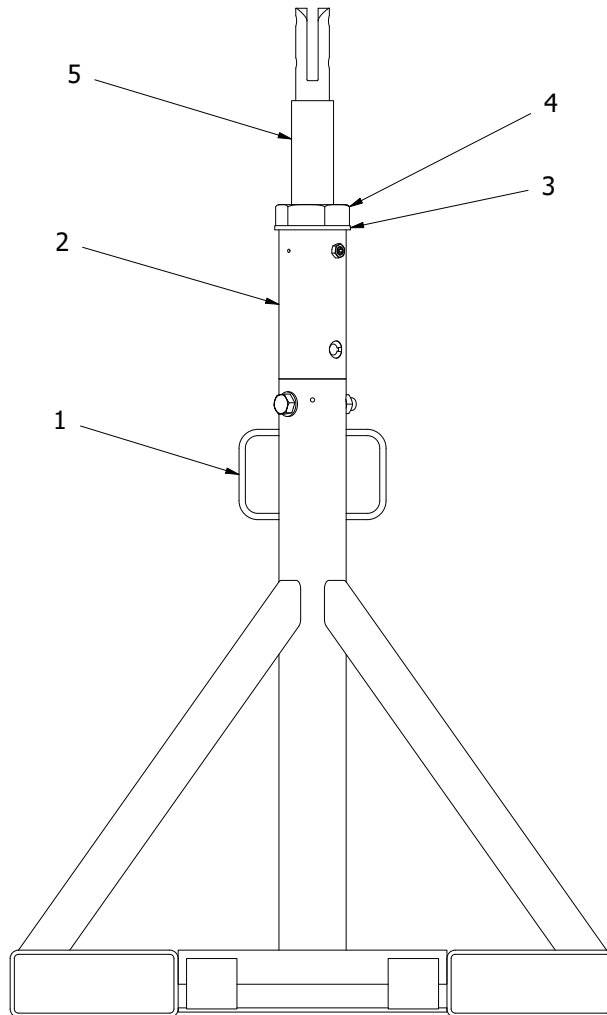


Figure 8.6-1 Pedestal Assembly, 46 7/8" Height

IPB Figure 7 - AGSE-T01616-S01 Pedestal Adapter 8 7/8" Height

ITEM	PART NUMBER	QTY	PART DESCRIPTION
	AGSE-T01616-S01	-	Pedestal Adapter 8 7/8" Height (Illustration Figure 8.7-1)
1.	AGSE-T01603-P05	1	Aft Mount Bracket Support
2	AGSE-S00121-08CE16A27	2	Set Screw
3	AGSE-S00139-08CA01	2	Nut
4	AGSE-S00104-12C066A01	1	Screw, Hex Head
5	AGSE-S00150-12CA01	1	Nut
6	AGSSE-S00131-12A17	1	Washer

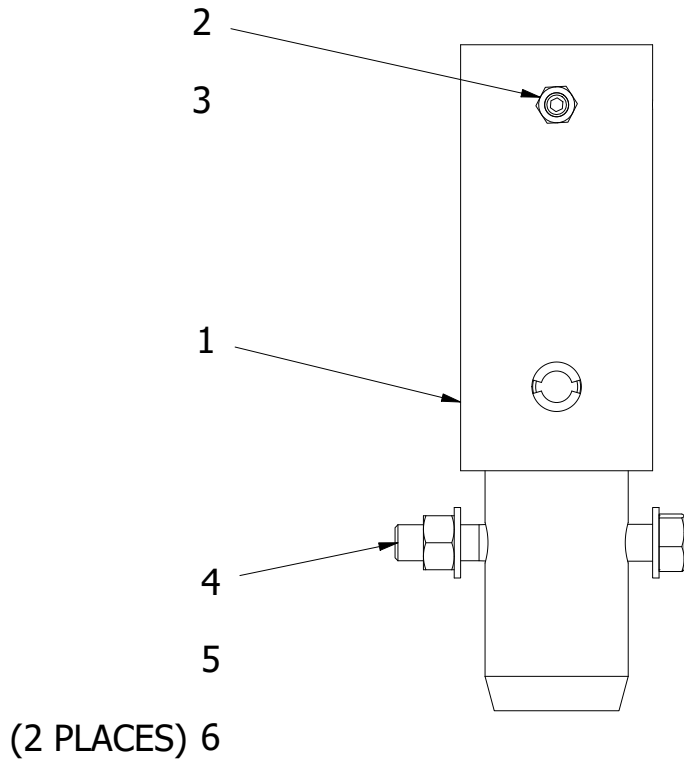


Figure 8.6-1 Pedestal Adapter 8 7/8" Height

IPB Figure 8 - AGSE-T01615-S05 Pedestal Assembly - 56" Height

ITEM	PART NUMBER	QTY	PART DESCRIPTION
	AGSE-T01615-S05	-	Pedestal Assembly - 56" Height (Illustration Figure 8.8-1)
1.	AGSE-T01603-P01	1	Pedestal - 43"
2.	AGSE-T01616-S03	1	Pedestal Adapter - 13" Height (See Detail in IPB Figure 9)
3.	AGSE-T01601-P05	1	Thrust Washer
4.	AGSE-T01601-P04	1	Adjuster Nut
5.	AGSE-T01601-P03	1	Threaded Assembly

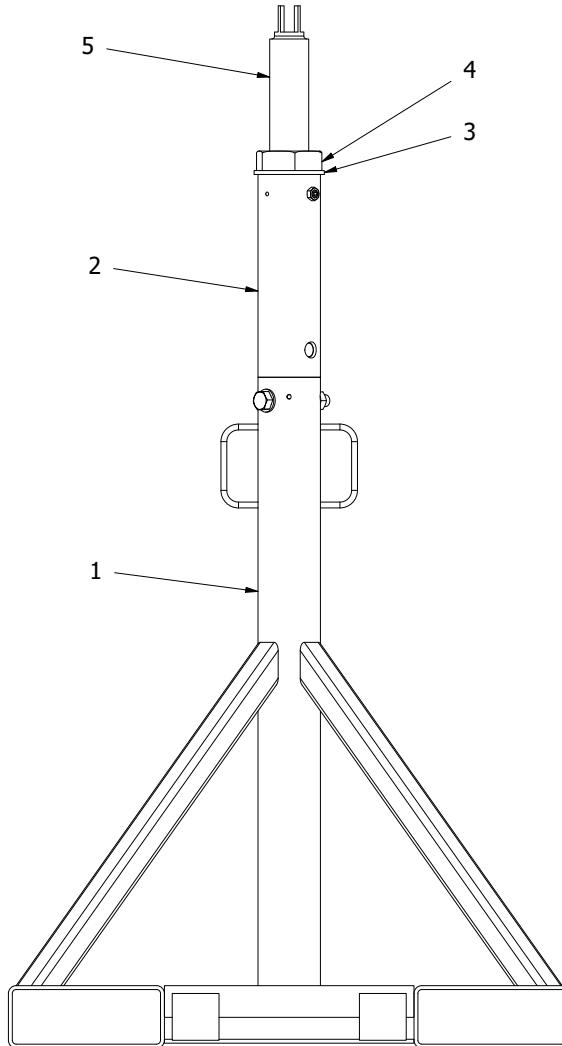


Figure 8.8-1 Pedestal Assembly, 56" Height

IPB Figure 9 - AGSE-T01616-S03 Pedestal Adapter 13" Height

ITEM	PART NUMBER	QTY	PART DESCRIPTION
	AGSE-T01616-S03	-	Pedestal Adapter 13" Height (Illustration Figure 8.9-1)
1.	AGSE-T01603-P04	1	Aft Mount Support
2	AGSE-S00121-08CE16A27	2	Set Screw
3	AGSE-S00139-08CA01	2	Nut
4	AGSE-S00104-12C066A01	1	Screw, Hex Head
5	AGSE-S00150-12CA01	1	Nut
6	AGSSE-S00131-12A17	1	Washer

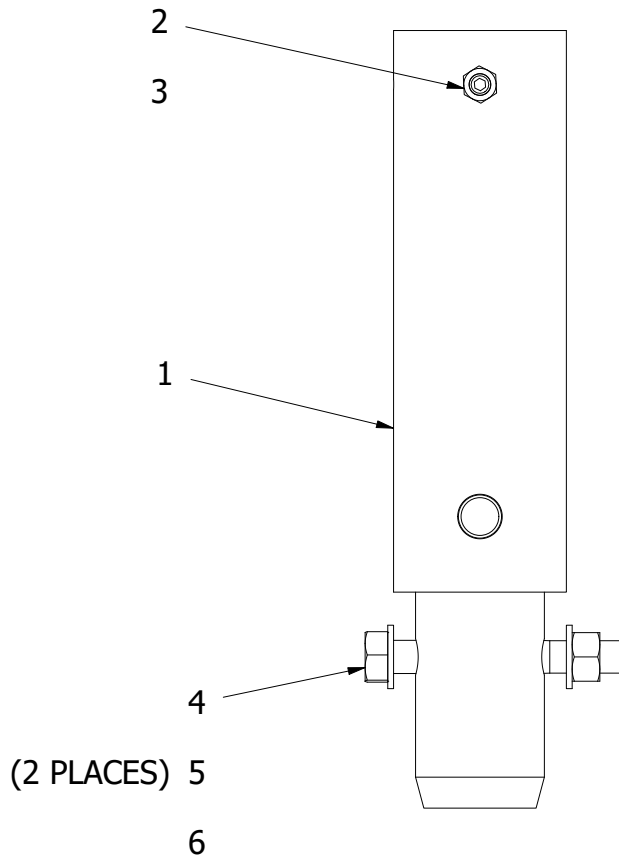


Figure 8.9-1 Pedestal Adapter 13" Height

IPB Figure 10 - AGSE-T016-G12 Pedestal Set for CF6-80A/80C2

ITEM	PART NUMBER	QTY	PART DESCRIPTION
	AGSE-T016-G12	-	Pedestal Set for CF6-80A/80C2 (Illustration Figure 8.10-1)
1.	AGSE-T01615-S02	2	Pedestal Assembly, 40" Height (See Detail in IPB Figure 11)
2.	AGSE-T01614-S12	1	CF6-80A/80C2 Adapter Assembly (See Detail in IPB Figure 12)
3.	AGSE-T01615-S01	2	Pedestal Assembly, 55-7/8" Height (See Detail in IPB Figure 13)

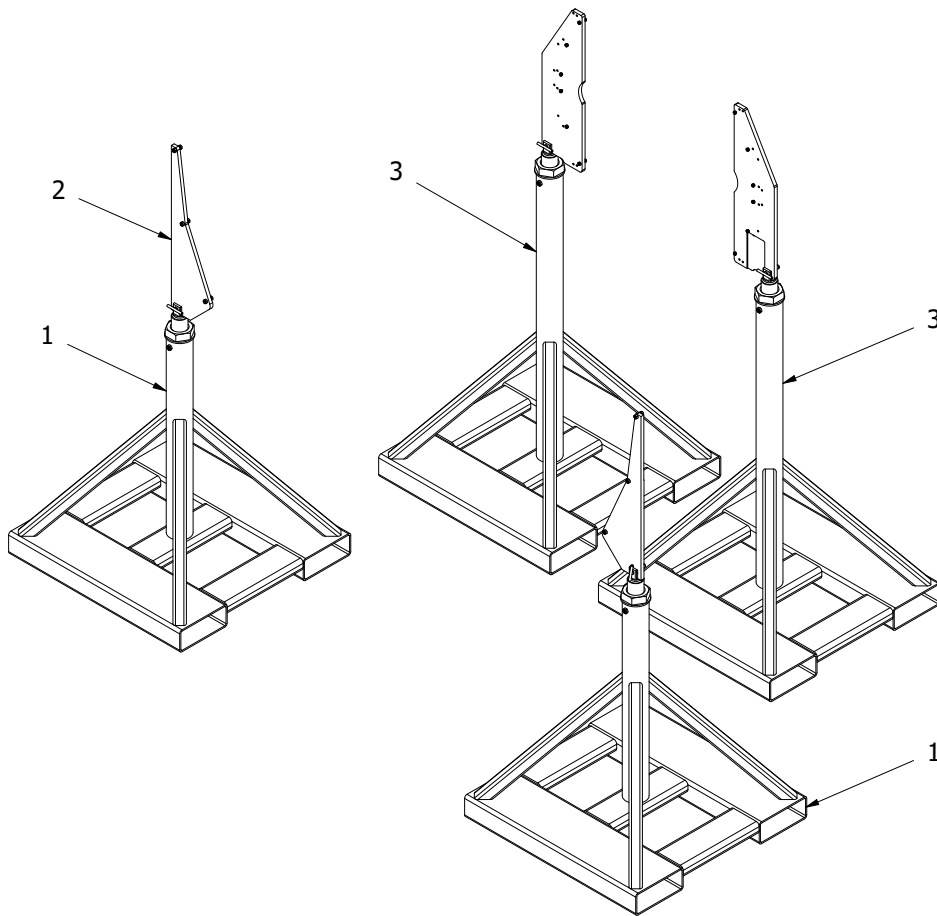


Figure 8.10-1. Pedestal Assembly for CF6-80A/80C2

IPB Figure 11 - AGSE-T01615-S01 Pedestal Assembly - 55 7/8" Height

ITEM	PART NUMBER	QTY	PART DESCRIPTION
	AGSE-T01615-S01	-	Pedestal Assembly - 55 7/8" Height (Illustration Figure 8.11-1)
1.	AGSE-T01601-P02	1	Pedestal - 55 7/8"
2.	AGSE-T01601-P05	1	Thrust Washer
3.	AGSE-T01601-P04	1	Adjuster Nut
4.	AGSE-T01601-P03	1	Threaded Assembly
5.	AGSE-S00121-05CE16A05	2	Set Screw
6.	AGSE-S00139-08CA05	2	Nut

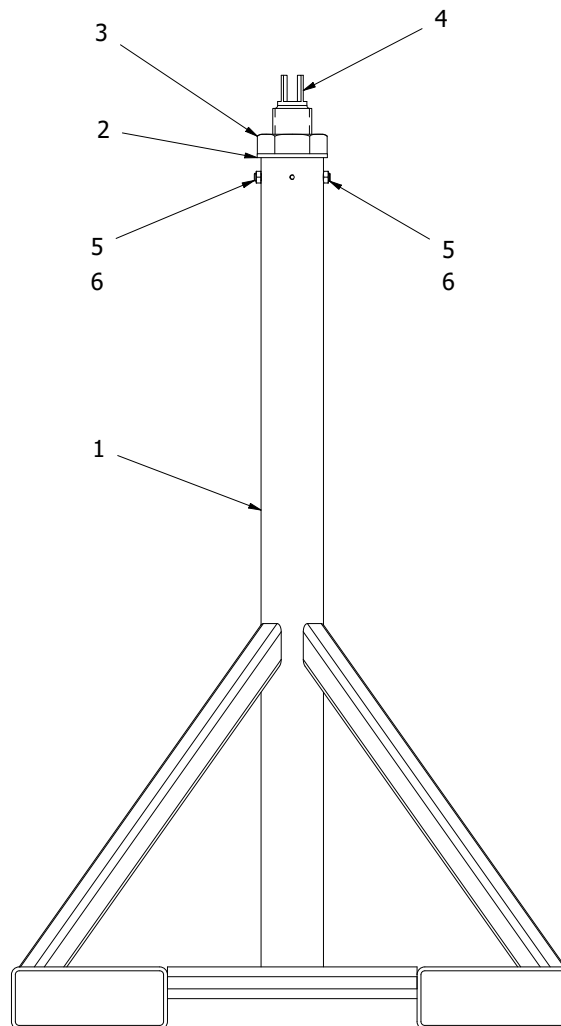


Figure 8.11-1 Pedestal Assembly, 55 7/8" Height

IPB Figure 12 - AGSE-T01615-S02 Pedestal Assembly - 40" Height

ITEM	PART NUMBER	QTY	PART DESCRIPTION
	AGSE-T01615-S01	-	Pedestal Assembly - 40" Height (Illustration Figure 8.12-1)
1.	AGSE-T01601-P01	1	Pedestal - 40"
2.	AGSE-T01601-P05	1	Thrust Washer
3.	AGSE-T01601-P04	1	Adjuster Nut
4.	AGSE-T01601-P03	1	Threaded Assembly
5.	AGSE-S00121-05CE16A05	2	Set Screw
6.	AGSE-S00139-08CA05	2	Nut

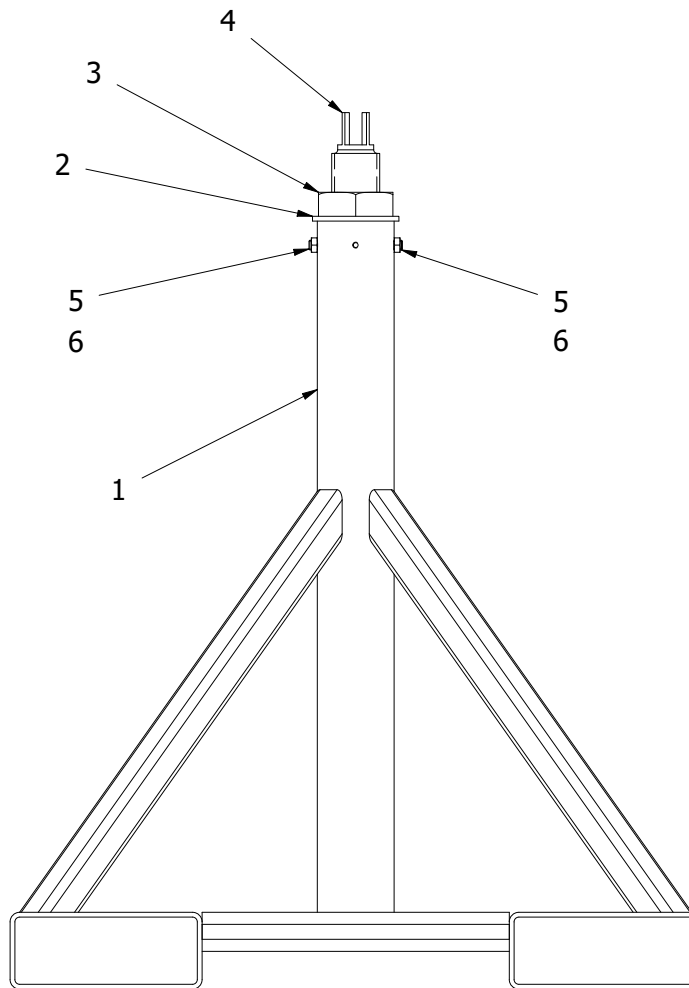


Figure 8.12-1 Pedestal Assembly, 40" Height

IPB Figure 13 - AGSE-T01614-S12 Adapter Assembly - CF6-80A/80C2

ITEM	PART NUMBER	QTY	PART DESCRIPTION
	AGSE-T01614-S12	-	Adapter Assembly - CF6-80A/80C2 (Illustration Figure 8.13-1)
1.	AM-2055-301	1	FWD Mount Adapter, LH
2.	AM-2055-302	1	FWD Mount Adapter, RH
3.	AGSE-T01602-S02	1	Aft Mount, RH
4.	AGSE-T01602-S01	1	Aft Mount, LH
5.	AM-90625-34-TNC	4	Safety Pin - 5/8" OD x 2 3/8" Grip
6.	AGSE-S00104-04C020A05	12	Hex Head Cap Screw - 1/4-20UNC x 1 1/8" Lg - SS
7.	AGSE-S00150-04CA05	12	Hex Nut - 1/4-20UNC - SS
8.	AGSE-S00104-06F020A05	6	Screw, Hex Head
9.	AGSE-S00150-06FA05	6	Nut

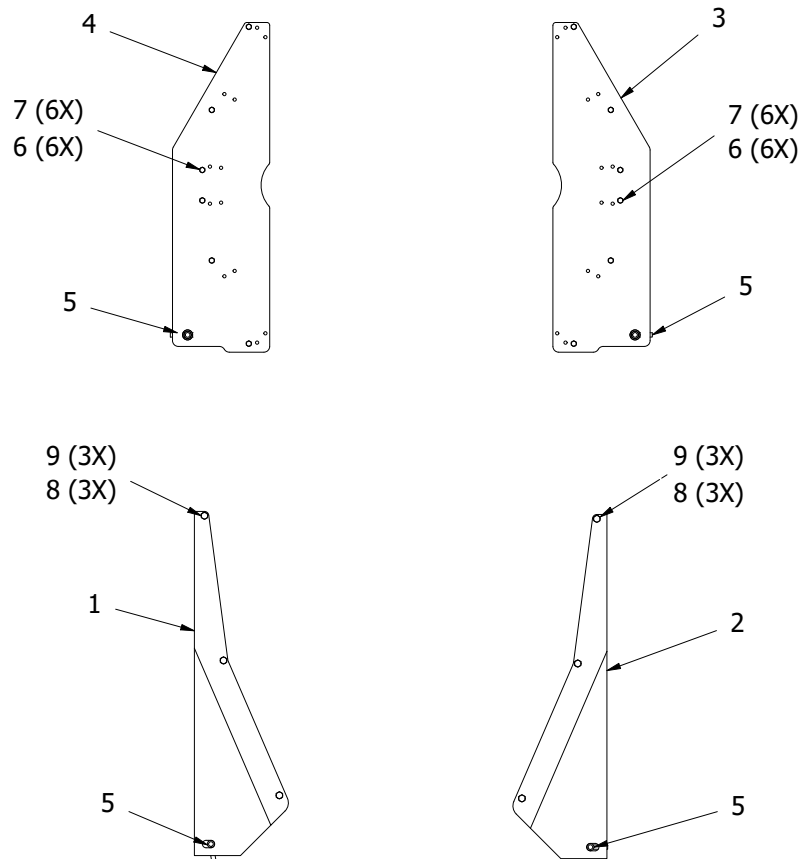


Figure 8.13-1 Forward Adapter

9.0 – Stencils, Decals, and Placards

9.1 General

Various stencils, decals, and placards are added to the equipment to provide warnings, cautions, and general information. These items should be reviewed and understood by maintenance and user personnel.

9.2 Stencils and Placards

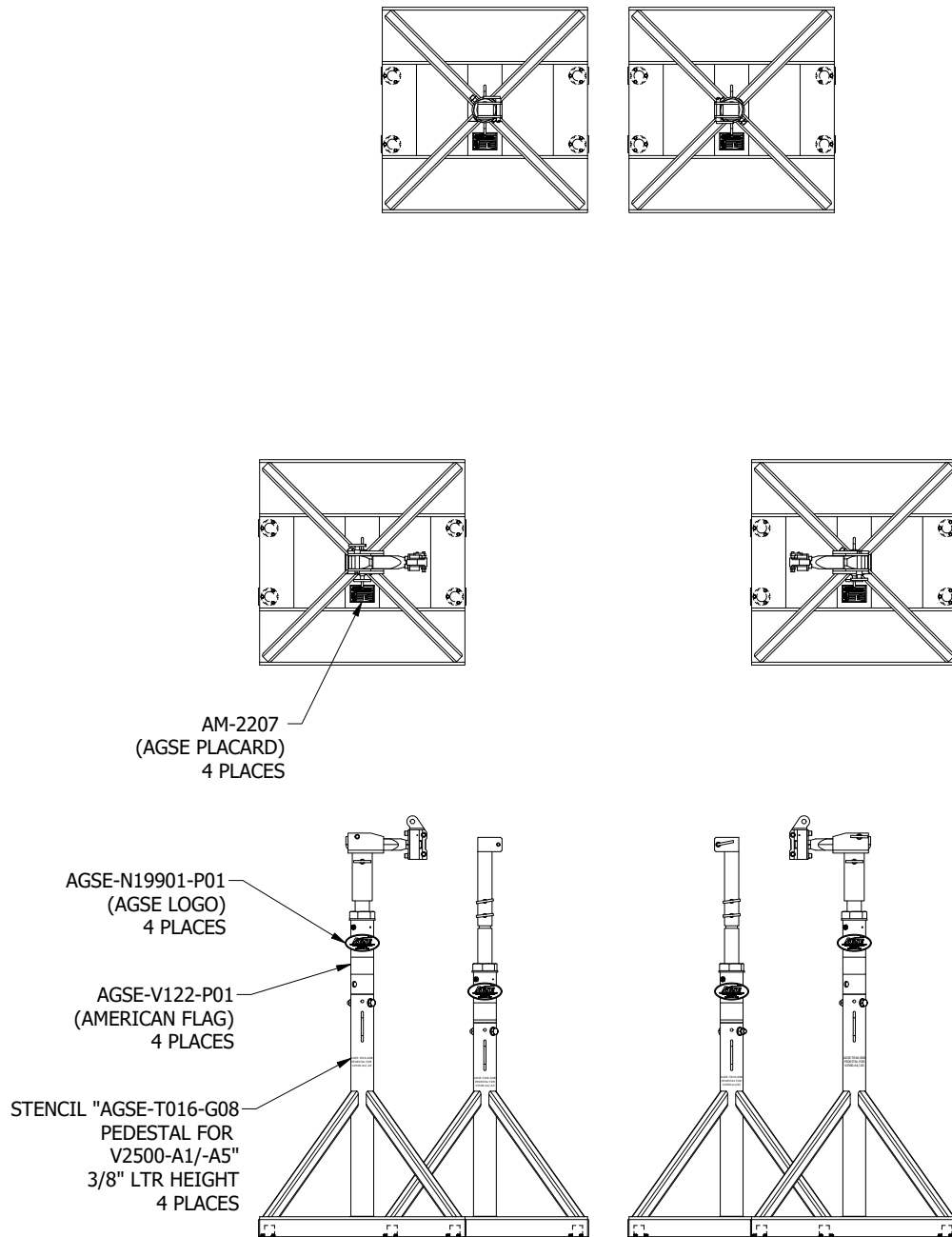


Figure 9.2-1 Stencils and Placard for AGSE-T016-G08

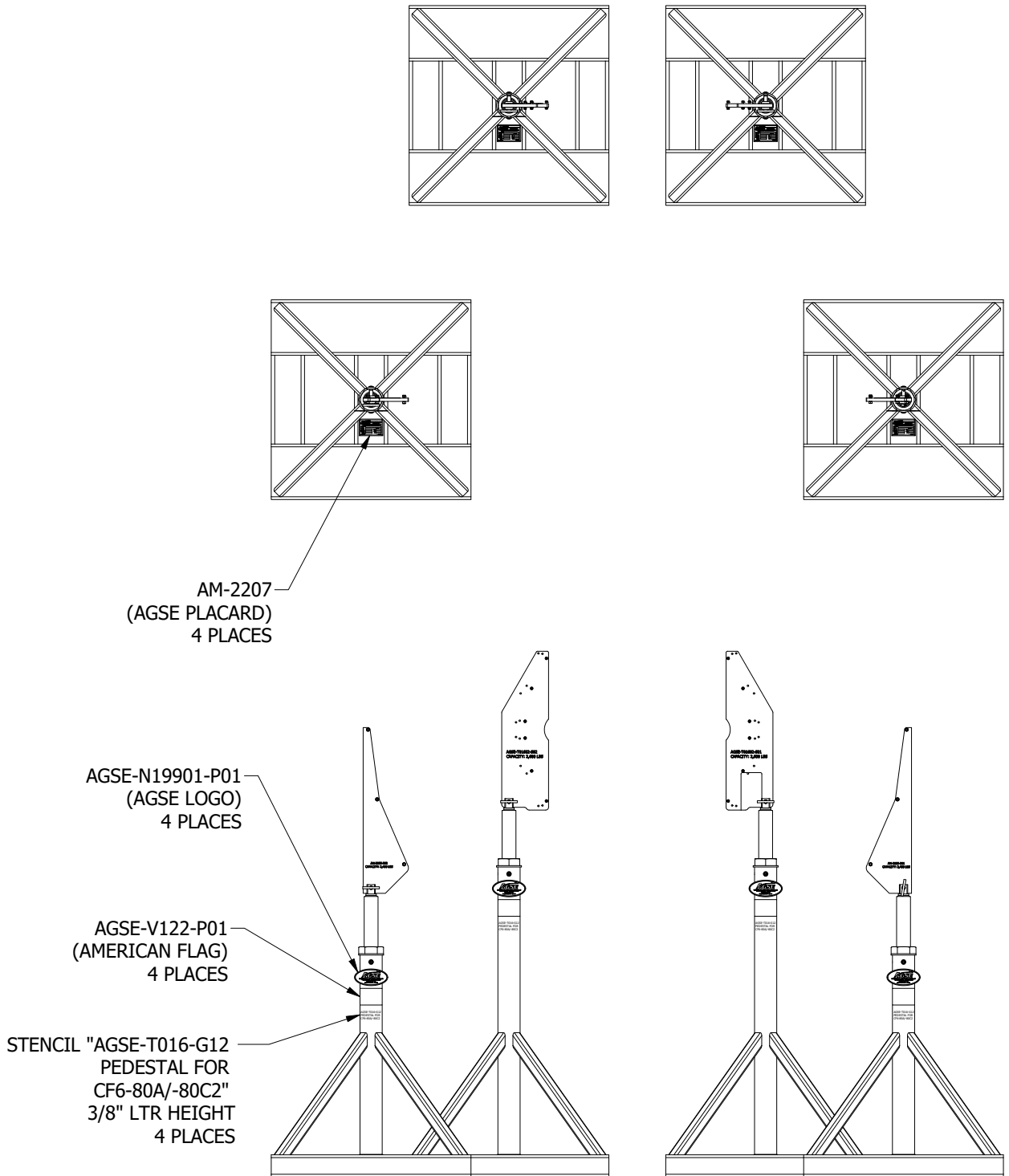


Figure 9.2-2 Stencils and Placard for AGSE-T016-G12

10.0 – Recommended Spares

10.1 Critical Items

AGSE defines “critical” items as those items, if broken or missing, that would render the equipment inoperable or severely impair equipment operation. Since most of these items are also long leads, it is AGSE’s recommendation that such items be identified, purchased, and stocked by the customer. In the remote event of “critical” item failure, the equipment can be quickly repaired and placed back in service with minimal down time.

AGSE does not typically stock all components used with the equipment, so immediate shipment of “critical” items may not always be possible. AGSE will respond to customer requests for quotation on any spare parts, and expedite orders for spare parts as required. The customer should never assume immediate delivery is always possible.

It is the responsibility of the operator of the equipment to review the recommended spares list and balance costs against equipment down-time. The list can be adjusted by the operator based on the actual service life of components experienced during equipment usage.

Part Number	Qty	Description
AM-90625-55T	2	Safety Pin
AM-90750-49T	2	Safety Pin
AM-2228-K8	2	Safety Pin
AGSE-T01604-P03	1	Thread Tube & Clevis Assembly
AM-90625-34-TNC	2	Safety Pin
AGSE-T01601-P04	2	Adjuster Nut
AGSE-T01601-P05	2	Thrust Washer
AGSE-T01601-P03	1	Threaded Assembly
AGSE-S00139-08CA01	2	Nut
AGSE-S00121-05CE16A05	2	Set Screw