



This document contains information proprietary to
ADVANCED GROUND SYSTEMS ENGINEERING LLC
and shall not be reproduced, transferred to other documents, disclosed to others, or used for
any purpose other than that for which it is furnished without the prior written permission of
Advanced Ground Systems Engineering LLC.

AGSE-T064-G01

Parts List

For C5M Cowl Door Hold Open Equipment

ORIGINAL PART LIST DATED.....03/06/2019

LATEST MANUAL REVISION LEVEL 03/06/2019 (Rev NC)

ADVANCED GROUND SYSTEMS ENGINEERING LLC

10805 Painter Ave., Santa Fe Springs, CA, 90670 • PHONE: 562-906-9300 • FAX: 562-906-9308 • E-MAIL: agse@agsecorp.com

INDEX

SECTION	DESCRIPTION	PAGE(S)
1.A	Revisions	1.A
1.0	Parts Breakdown	1.0
1.0	1.0 General	1.0
1.0	1.2 Illustrated Parts Breakdown	1.0
1.0	IPB Figure 1 - AGSE-T064-G01 Cowl Door Hold Open Equipment	1.1
1.0	IPB Figure 2 - AGSE-T055-G02 Fan & Core Cowl Doors Hold Open	1.2
1.0	IPB Figure 3 - AGSE-T055-S01 TR Beam Assembly	1.3
1.0	IPB Figure 4 - AGSE-T055-S02 TR Beam Assembly	1.5
1.0	IPB Figure 5 - AGSE-T055-S06 Fan Beam Assembly	1.7
1.0	IPB Figure 6 - AGSE-T056-G01 Thrust Reverser Support - High Wind	1.8
1.0	IPB Figure 7 - AGSE- T057-G01 Thrust Reverser Door Actuator Support	1.10

1.0 – Revisions

The following is an itemized record of all changes and revisions, if applicable, which have been incorporated into this manual.

PAGE	REV	DESCRIPTION OF CHANGE	DATE
-------------	------------	------------------------------	-------------

1.0 – Parts Breakdown

1.1 General

The following pages can be used in the identification of components used in the product described in this manual. Parts Lists are broken down by “ITEM,” “PART NUMBER,” “QTY,” and “DESCRIPTION.”

NOTICE

“ITEM” numbers are for reference to the Illustrated Parts Breakdown (IPB) only. Do not order replacement parts by “ITEM” number. Order parts by “PART NUMBER” only.

Purchased parts will reflect a valid part number and source from which the product may be purchased. AGSE does not guarantee availability of purchased parts indefinitely.

1.2 Illustrated Parts Breakdown

IPB Figure 1 – AGSE-T064-G01 C5M Cowl Door Hold Open Equipment Assembly

ITEM	PART NUMBER	QTY	PART DESCRIPTION
	AGSE-T064-G01	-	Cowl Door Hold Open Equipment
1.	AGSE-T055-G02	1	Fan and Core Cowl Hold Open
2.	AGSE-T056-G01	1	Support, Thrust Reverser, High Wind
3.	AGSE-T057-G01	1	Support, Thrust Reverser, Door Actuator

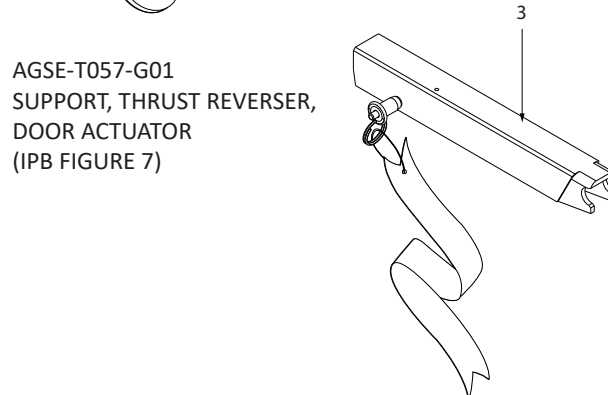
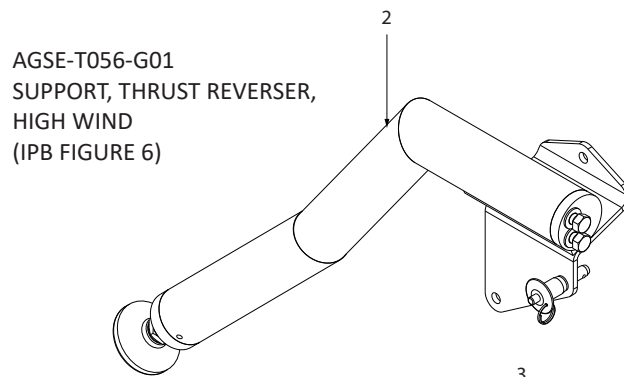
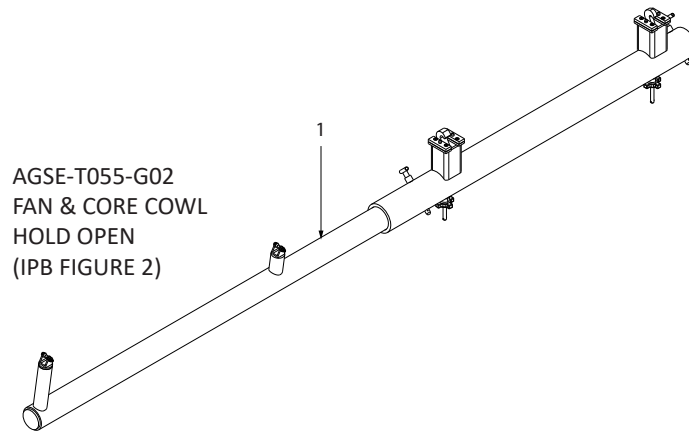


Figure 1.1-1 AGSE-T064-G01 Equipment Assembly

IPB Figure 2 – AGSE-T055-G02 Fan and Core Cowl Doors Hold Open

ITEM	PART NUMBER	QTY	PART DESCRIPTION
	AGSE-T055-G02	-	Fan and Core Cowl Doors Hold Open (Illustration Figure 1.2-1)
1	AGSE-T055-S01	1	TR Beam Assy (See IPB Figure 3 for Details)
2	AGSE-T055-S02	1	TR Beam Assy (See IPB Figure 4 for Details)
3	AGSE-T055-S06	2	Fan Beam Assy (See IPB Figure 5 for Details)

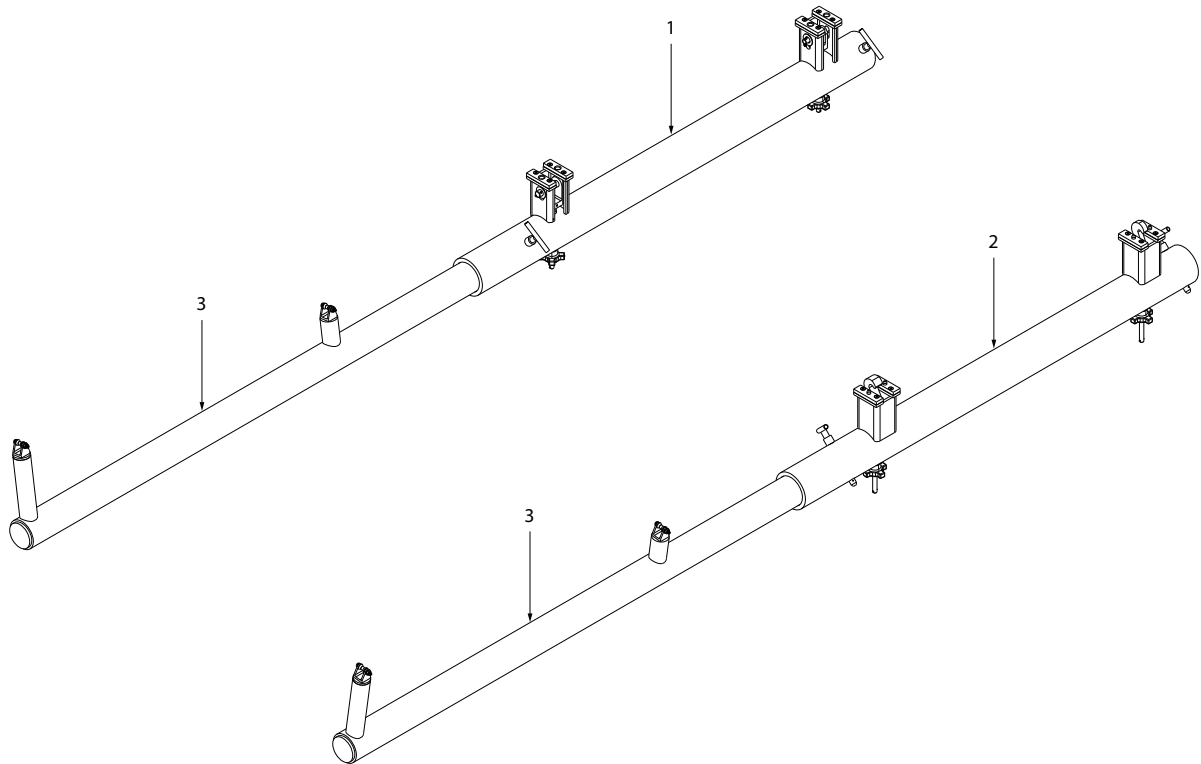


Figure 1.2-1 AGSE-T055-G02

IPB Figure 3 – AGSE-T055-S01 TR Beam Assembly

ITEM	PART NUMBER	QTY	PART DESCRIPTION
	AGSE-T055-S01	-	TR Beam Assy (Illustration Figure 1.3-1)
1	AGSE-T055-P01	1	Tube Assembly
2	AGSE-T055-P09	1	Clevis & Threaded Rod Assy-1
3	AGSE-T055-P10	1	Clevis & Threaded Rod Assy-2
4	AM-90500-59T	2	Safety Pin
5	CL-3-HK-4A	2	Knob Handle
6	Commercial	2	Flat Washer - 3/8" Dia. - SS
7	MS20392-8C87	2	Clevis Pin
8	98017A214	2	Flat Washer - 9/16" Nom ID x 1.07" OD x 1/16" Thk
9	98355A140	1	Cotter Pin - 1/8" Dia.
10	92373A185	1	Roll Pin - 1/8" x 1-1/4" Lg - SS
11	92373A143	2	Roll Pin - 3/32" x 1/2" Lg - SS
12	MS20392-6C87	1	Clevis Pin
13	91263A546	8	SHCS - #10-32 x 3/4" Lg - Steel - Zinc Plt
14	91263A070	1	Cotter Pin - .187" Dia.
15	90107A032	2	Flat Washer - 1/2" Nom ID x 1.12" OD x 1/16" Thk
16	AGSE-T055-P11	4	Pad, PLT .375 x 1 x 3 GR OPT

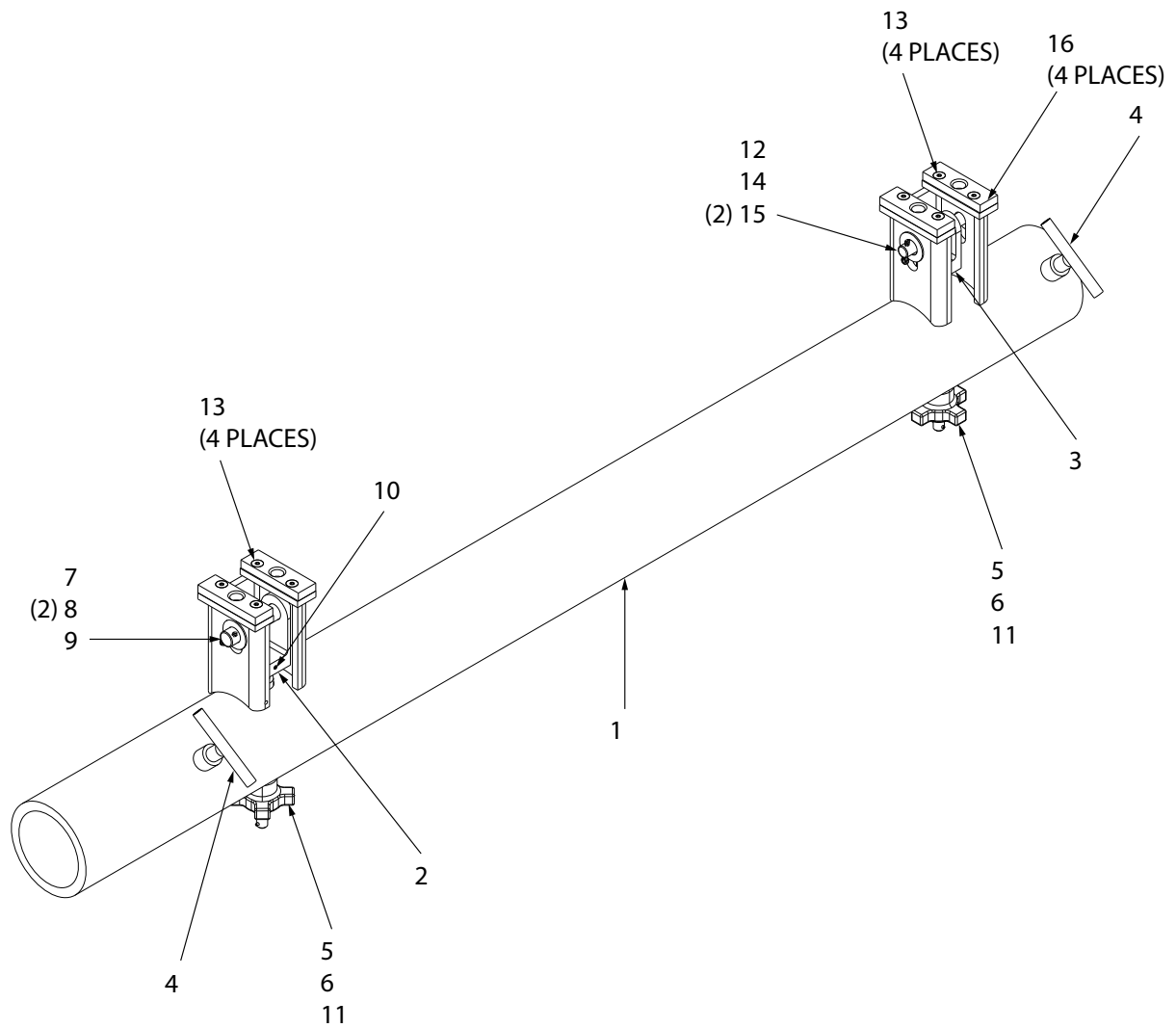


Figure 1.3-1 AGSE-T055-S01

IPB Figure 4 – AGSE-T055-S02 TR Beam Assembly

ITEM	PART NUMBER	QTY	PART DESCRIPTION
	AGSE-T055-S02	-	TR Beam Assy (Illustration Figure 1.4-1)
1	AGSE-T055-P02	1	Tube Assembly
2	AGSE-T055-P03	1	Hook Assy
3	AGSE-T055-P04	1	Hook Assy
4	AM-90500-59T	2	Safety Pin
5	CL-3HK-4A	2	Hand Knob
6	Commercial	2	Flat Washer - 3/8" Dia. - SS
7	92373A143	2	Roll Pin - 3/32" x 1/2" Lg - SS
8	91263A546	8	SHCS - #10-32 x 3/4" Lg - Steel - Zinc Plt
9	AGSE-T055-P12	4	Guide Pin, Bar .562 Ø x 1 17 - 4 COND. A
10	AGSE-T055-P13	4	Pad, PLT .375 x 1 x 3 GR OPT 17 - 4 COND. A

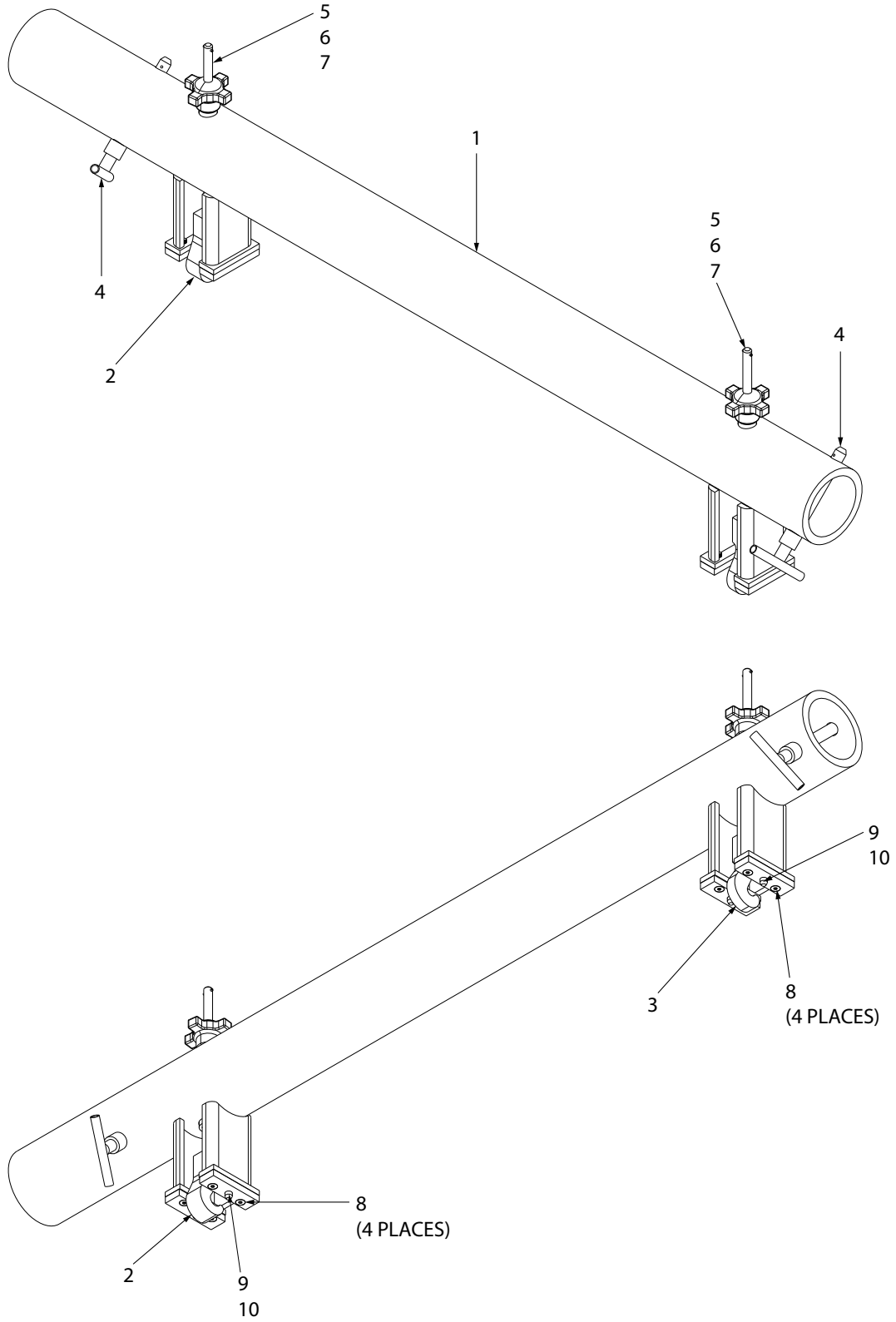


Figure 1.4-1 AGSE-T055-S02

IPB Figure 5 – AGSE-T055-S06 Fan Beam Assembly

ITEM	PART NUMBER	QTY	PART DESCRIPTION
	AGSE-T055-S06	-	Fan Beam Assy (Illustration Figure 1.5-1)
1	AGSE-T055-P08	1	Tube Assembly
2	92314A836	2	HHMS - #10-32 x 1-1/2" Lg
3	92217A440	4	Flat Washer - #10 - SS
4	93776A401	2	Flange Hex Nut - #10-32 - SS
5	AGSE-T055-P14	2	Receiver, Bar .625 Ø x 1.0 LG SS

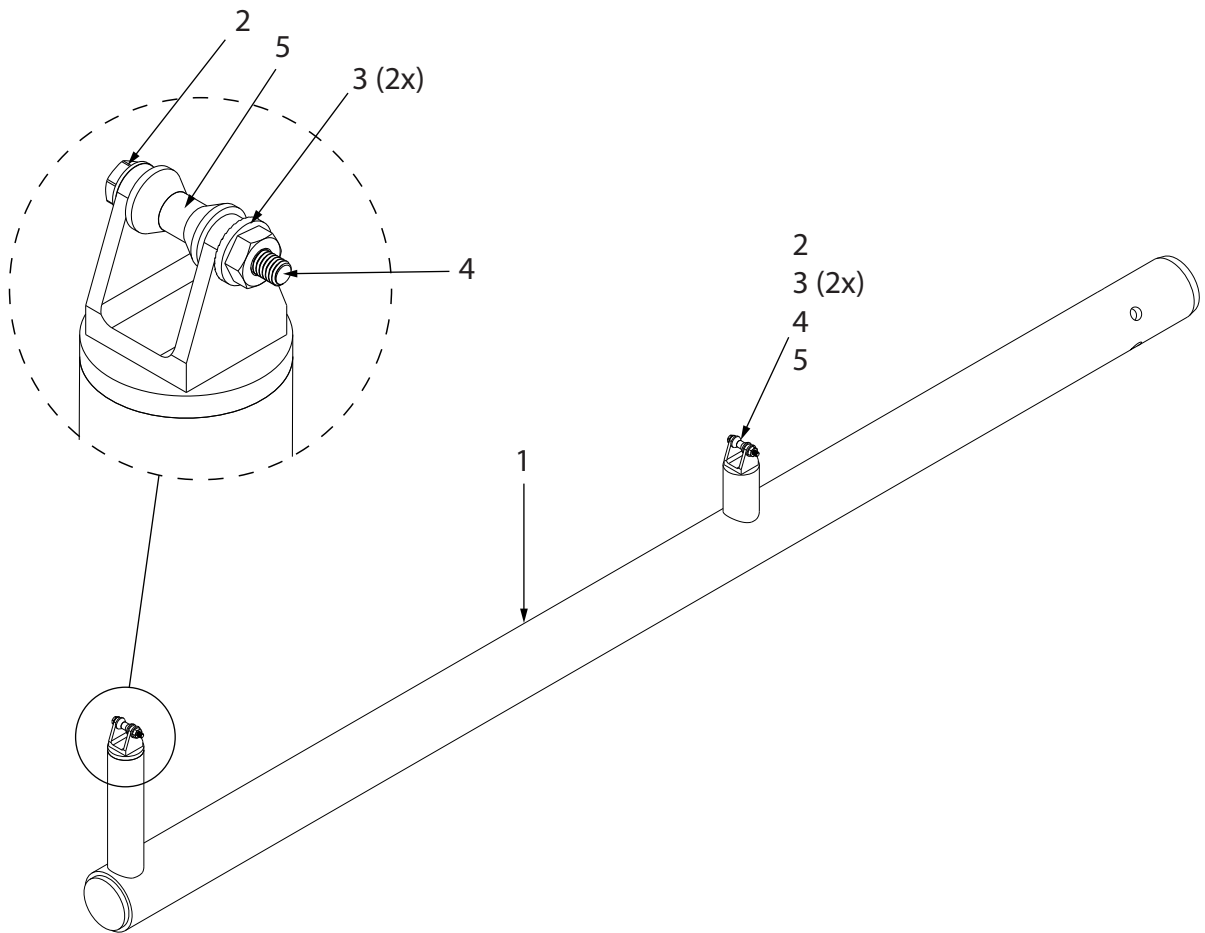


Figure 1.5-1 AGSE-T055-S06

IPB Figure 6 – AGSE-T056-G01 Thrust Reverser Support - High Wind

ITEM	PART NUMBER	QTY	PART DESCRIPTION
	AGSE-T056-G01	-	Support, Thrust Reverse High Wind
	AGSE-T056-S01	-	Support TR - High Wind (Illustration Figure 1.6-1)
	AGSE-T056-S02	-	Support TR - High Wind (Illustration Figure 1.6-1)
1	AGSE-T056-P01	1	Weld Assy (Used on AGSE-T056-S01)
2	AGSE-T056-P02	1	Weld Assy (Used on AGSE-T056-S02)
3	AGSE-T056-P03	1	Pad
4	MS17984-605	1	Ball Lock Pin - 3/8" Dia. x 1/2" Grip
5	NAS1149C0663R	2	Washer - 3/8" Nom ID
6	NAS6206-6	2	Bolt - 3/8" Dia. x 7/8" Lg
7	Commercial	1	Cable
8	Commercial	1	Jam Nut - 5/8"-11UNC - Zinc Plt

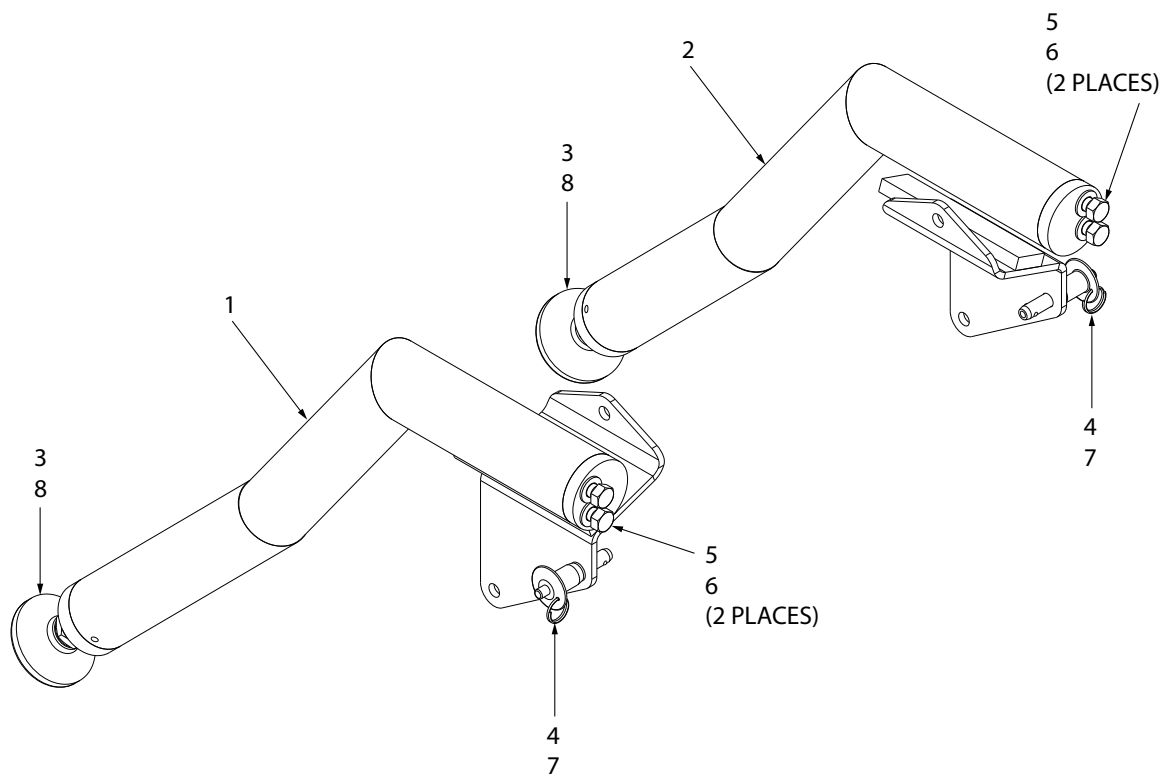


Figure 1.6-1 AGSE-T056-G01

IPB Figure 7 – AGSE-T057-G01 Thrust Reverser Door Actuator Support

ITEM	PART NUMBER	QTY	PART DESCRIPTION
	AGSE-T057-G01	-	Support - Thrust Reverser - Door Actuator (Illustration Figure 1.7-1)
	AGSE-T057-S01	-	Support TR Door Actuator
1	AGSE-T057-P01	1	Support
2	CL-4-BLPB-1.50-S	1	Ball Lock Pin
3	MS51844-82	2	Sleeve
4	NAS1756N36	1	Streamer

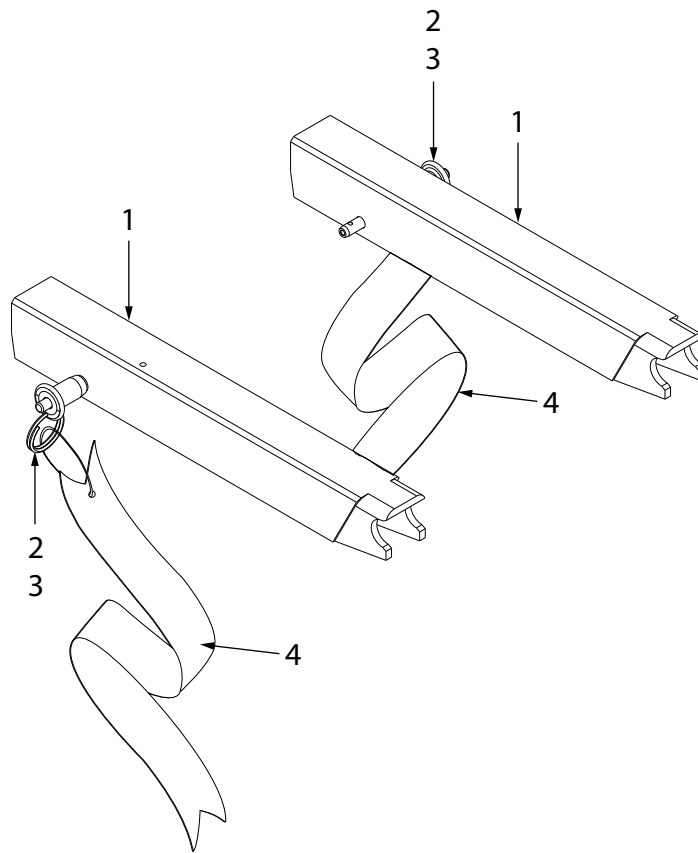


Figure 1.7-1 AGSE-T057-G01